



**WEAR THE BEST™**

STOCK | 2018

Metuchen Center Inc./Garden State Apparel  
10-12 Embroidery St.  
Sayreville, NJ 08872  
732-418-1388 P 732-246-3341 F





..... 2-5

..... 6-11

..... 12-15

..... 16-23

..... 24-35

..... 24-27

..... 28-31

..... 32-35

**ABEL** ..... 36-41

..... 42-45

..... 46-49

..... 50-55

..... 56-59

..... 60-67

**S** ..... 68-77

**IAL** ..... 78-79

# SIZE

**APE**  
 shape with tall front  
 and peaked back panels.

**SHAPE**  
 Pro Pattern with  
 front and back panels.

**HAVE**  
 Pro Pattern with  
 peaked crown shape.

**STRUCTURED**  
 crown shape with  
 flat front panels.

**INSTRUCTURED**  
 relaxed crown shape  
 structure.

performance fabric for  
 wicking sweat.

lightweight performance  
 fabric for wicking sweat.

FITTED	R-FLEX	ADJUSTABLE	INCHES	CM
6 <sup>3</sup> / <sub>8</sub> *			20	51
6 <sup>1</sup> / <sub>2</sub> *			20 <sup>3</sup> / <sub>8</sub>	52
6 <sup>5</sup> / <sub>8</sub>			20 <sup>3</sup> / <sub>4</sub>	53
6 <sup>3</sup> / <sub>4</sub>			21 <sup>1</sup> / <sub>4</sub>	54
6 <sup>7</sup> / <sub>8</sub>			21 <sup>5</sup> / <sub>8</sub>	55
7			22	56
7 <sup>1</sup> / <sub>8</sub>			22 <sup>3</sup> / <sub>8</sub>	57
7 <sup>1</sup> / <sub>4</sub>			22 <sup>3</sup> / <sub>4</sub>	58
7 <sup>3</sup> / <sub>8</sub>			23 <sup>1</sup> / <sub>8</sub>	59
7 <sup>1</sup> / <sub>2</sub>			23 <sup>1</sup> / <sub>2</sub>	60
7 <sup>5</sup> / <sub>8</sub>			23 <sup>7</sup> / <sub>8</sub>	61
7 <sup>3</sup> / <sub>4</sub>			24 <sup>1</sup> / <sub>4</sub>	62
7 <sup>7</sup> / <sub>8</sub>			24 <sup>5</sup> / <sub>8</sub>	63
8			25	64

\* Size 6<sup>3</sup>/<sub>8</sub> and 6<sup>1</sup>/<sub>2</sub> not available in Fitted Caps  
 \*\* Youth size available in PTS20 only.



# QUALITY IN EVERY STITCH PRIDE IN EVERY CAP

Our love of the game inspires us to be the best, so we've built our company upon a foundation of quality products and superior service. Richardson has remained a family owned and operated company since 1970, and like all athletes and adventurers, sport is at the core of who we are. It connects us to the world around us and drives us to make the perfect cap. To us, the perfect cap is all about fit, comfort, protection, team unity, and self-expression.

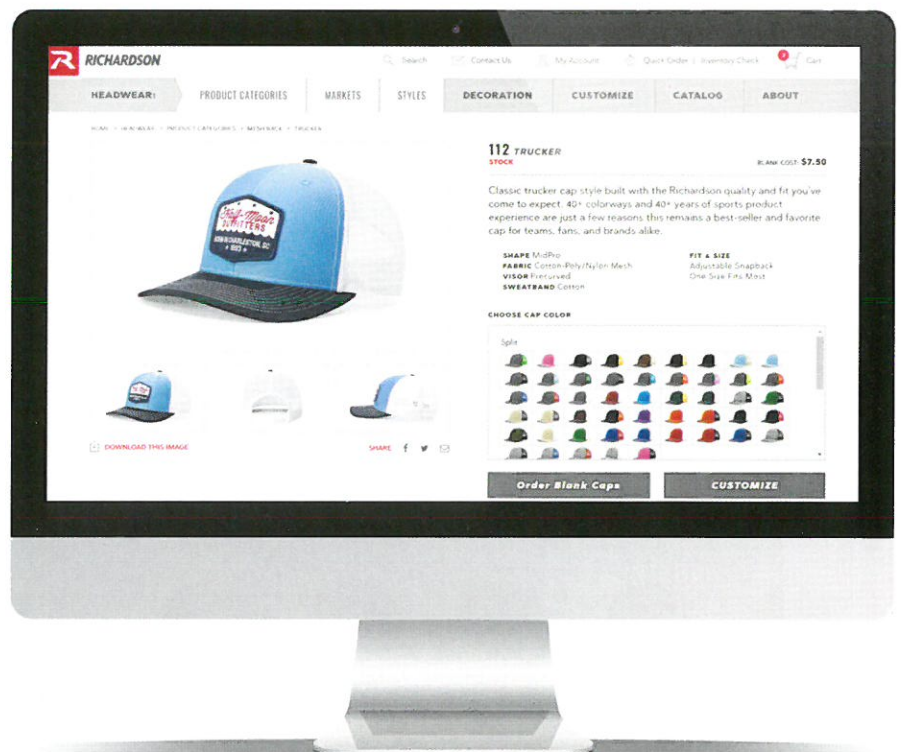
Our mission is to make product that players ask for, because ballplayers demand the best. In making the best performing product for on-field play, we've learned how to apply our shapes, fits, and features to outdoor and lifestyle caps designed to be worn anywhere and everywhere. In pursuit of being the best at our craft, we continually work to improve our product, service, and how we connect with you. Our goal is not only to be your favorite cap, but also your favorite company to do business with!

## WEAR THE BEST™

RICHARDSONSPORTS.COM

## THE ALL NEW RICHARDSON WEBSITE

- SUBMIT ONLINE ORDERS FASTER
- CHECK REAL-TIME INVENTORY
- PLACE BLANK CAP ORDERS QUICKLY
- NEW AND IMPROVED CAP DESIGNER
- OUR SAME GREAT SERVICE, SIMPLIFIED





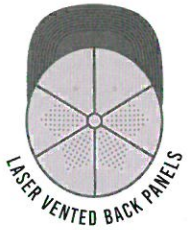
# PTS

## PERFORMANCE TEAM SERIES

Innovative caps for players who demand the best.

### PTS30 LITE... R-FLEX

**FIT:** R-FLEX  
**SIZE:** XS-SM (6<sup>5</sup>/<sub>8</sub>-7), SM-MD (7-7<sup>1</sup>/<sub>4</sub>), LG-XL (7<sup>3</sup>/<sub>8</sub>-7<sup>7</sup>/<sub>8</sub>)  
**SHAPE:** MID-PRO  
**FABRIC:** PERFORMANCE LITE STRETCH  
**VISOR:** UFORM  
**SWEATBAND:** STAY-DRI PERFORMANCE  
**MSRP:** \$17.00



**SOLID COLORS:** Undervisor is charcoal.



**COMBINATION COLORS:** First color is crown and eyelets. Second color is the visor and button. Undervisor is charcoal.



**ALTERNATE COLORS:** First color is crown front panels and eyelets. Second color is the crown back panels, visor, and button. Undervisor is charcoal.



**SPLIT COLORS:** First color is the crown front panels, visor, and eyelets. Second color is the crown back panels and button. Undervisor is charcoal.





# PTS20 PULSE R-FLEX

**FIT:** R-FLEX  
**SIZE:** XS-SM (6<sup>5</sup>/<sub>8</sub>-7), SM-MD (7-7<sup>1</sup>/<sub>4</sub>), LG-XL (7<sup>3</sup>/<sub>8</sub>-7<sup>7</sup>/<sub>8</sub>)  
**SHAPE:** MID-PRO  
**FABRIC:** PERFORMANCE STRETCH  
**VISOR:** UFORM  
**SWEATBAND:** STAY-DRI PERFORMANCE  
**MSRP:** \$16.00



**SOLID COLORS:** Undervisor is charcoal.



**COMBINATION COLORS:** First color is crown and eyelets. Second color is the visor and button. Eyelets on white, grey, and charcoal crowns match the visor and button. Undervisor is charcoal.



**ALTERNATE COLORS:** First color is crown front panels. Second color is the crown back panels, visor, eyelets, and button. White front panels have white eyelets. Undervisor is charcoal.



**CONTRASTING COLORS:** First color is crown and visor. Second color is eyelets and button. Undervisor is charcoal.



**PTS20Y SOLID COLORS:** Undervisor is charcoal.



**PTS20Y COMBINATION COLORS:** First color is crown and eyelets. Second color is the visor and button. Eyelets on white, grey, and charcoal crowns match the visor and button. Undervisor is charcoal.



**PTS20Y ALTERNATE COLORS:** First color is crown front panels. Second color is the crown back panels, eyelets, visor, and button. Undervisor is charcoal. White front panels have white eyelets.



# PTS20 PULSE YOUTH R-FLEX

**FIT:** Y (6<sup>1</sup>/<sub>2</sub>-6<sup>5</sup>/<sub>8</sub>)





# PTS40

**DRYVE**  
**R-FLEX**

**FIT:** R-FLEX  
**SIZE:** XS-SM (6<sup>3</sup>/<sub>8</sub>-7), SM-MD (7-7 1/4), LG-XL (7<sup>3</sup>/<sub>8</sub>-7<sup>5</sup>/<sub>8</sub>)  
**SHAPE:** FULL-PRO  
**FABRIC:** PERFORMANCE MICRO MESH  
**VISOR:** UFORM  
**SWEATBAND:** STAY-DRI PERFORMANCE  
**MSRP:** \$17.00



**SOLID COLORS:** Undervisor is charcoal.



**COMBINATION COLORS:** First color is crown and eyelets. Second color is the visor and button. Eyelets on white, grey, and charcoal crowns match the visor and button. Undervisor is charcoal.



**ALTERNATE COLORS:** First color is crown front panels. Second color is the crown back panels, visor, eyelets, and button. White front panels have white eyelets. Undervisor is charcoal.



**CONTRASTING COLORS:** First color is crown and visor. Second color is eyelets and button. Undervisor is charcoal.





# PTS65 **SURGE**

## FITTED

**FIT:** 12 FITTED SIZES  
**SIZE:** IN 1/8 INCREMENTS 6 3/8-8  
**SHAPE:** FULL-PRO  
**FABRIC:** PERFORMANCE POLY-SERGE  
**VISOR:** UFORM  
**SWEATBAND:** STAY-DRI PRO TWILL  
**MSRP:** \$16.00



**SOLID COLORS:** Undervisor is charcoal.



Black



Red



Dark Green



Maroon



Navy



Royal

UNIVERSITY OF TAMPA BASEBALL, 7X NCAA NATIONAL CHAMPIONS





# ON-FIELD

Caps built for the game.

## 514 SURGE ADJUSTABLE



**FIT:** ADJUSTABLE HOOK-AND-LOOP  
**SIZE:** SM (6 1/2"-7 1/8"), MD-LG (7-7 3/4")  
**SHAPE:** MID-PRO  
**FABRIC:** PERFORMANCE POLY-SERGE  
**VISOR:** PRECURVED  
**SWEATBAND:** COTTON  
**MSRP:** \$12.00



**SOLID COLORS:** Undervisor is grey.



**COMBINATION COLORS:** First color is crown and eyelets. Second color is the visor and button. Eyelets on white crowns match the visor and button. Undervisor is grey.



**CONTRASTING COLORS:** First color is crown and visor. Second color is the button and eyelets. Contrasting colors are not available in size small. Undervisor is grey. Size MD-LG only.





# 585 WOOL BLEND R-FLEX

**FIT:** R-FLEX  
**SIZE:** XS-SM (6<sup>5</sup>/<sub>8</sub>-7), SM-MD (7-7<sup>1</sup>/<sub>4</sub>), LG-XL (7<sup>3</sup>/<sub>8</sub>-7<sup>5</sup>/<sub>8</sub>)  
**SHAPE:** MID-PRO  
**FABRIC:** ACRYLIC-WOOL BLEND STRETCH  
**VISOR:** PRECURVED  
**SWEATBAND:** COMFORT STRETCH  
**MSRP:** \$14.00



**SOLID COLORS:** Undervisor is grey.



**COMBINATION COLORS:** First color is crown and eyelets. Second color is the visor and button. Undervisor is grey.



UNIVERSITY OF LA VERNE BASEBALL, 2X NATIONAL CHAMPIONS





# 172 PULSE SPORTMESH R-FLEX

**FIT:** R-FLEX  
**SIZE:** XS-SM (6<sup>5</sup>/<sub>8</sub>-7), SM-MD (7-7 1/4), LG-XL (7 3/8-7 5/8)  
**SHAPE:** MID-PRO  
**FABRIC:** PERFORMANCE STRETCH/SPORT MESH  
**VISOR:** PRECURVED  
**SWEATBAND:** COMFORT STRETCH  
**MSRP:** \$13.50

**PULSE** 

**R:ACTIVE**



**CONTRASTING COLORS:** First color is cap and undervisor. Second color is crown piping, button, and sandwich visor insert.



Black/White NEW    Dark Green/White NEW    Navy/White NEW    Red/White NEW    Royal/White NEW    White/Black NEW

**COMBINATION COLORS:** First color is crown, sandwich visor insert, and eyelets. Second color is visor, undervisor, crown piping, and button.



Black/Red NEW    Navy/Red NEW    Red/Black NEW    Royal/Red NEW    White/Black NEW    White/Dark Green NEW    White/Navy NEW    White/Red NEW    White/Royal NEW

**SPLIT COLORS:** First color is crown front, button, eyelets, visor, and undervisor. Second color is crown back panels, crown piping, sandwich visor insert, and contrast stitching on visor and crown front panels.



Black/Charcoal    Black/White    Cardinal/White    Charcoal/Black    Charcoal/Neon Blue    Charcoal/Neon Orange    Charcoal/Neon Yellow    Charcoal/Red    Charcoal/Royal    Charcoal/White  
 Dark Green/White    Maroon/White    Navy/White    Purple/White    Red/White    Royal/White

**TRI-COLORS:** First color is crown front, eyelets, sandwich visor insert, and contrast stitching on crown back panels. Second color is crown back panels. Third color is crown piping, button, visor, and undervisor. White contrast stitching on visor and crown front panels. Charcoal back caps have white contrast stitching on visor and crown. White front caps have white contrast stitching on visor and crown back panels.



Black/White/Gold    Black/White/Red    Cardinal/White/Black    Col Blue/White/Black    Col Blue/White/Navy    Dark Green/Charcoal/Black    Dark Green/White/Black    Gold/White/Black    Gold/White/Navy    Grey/White/Black  
 Kelly/Charcoal/Black    Kelly/White/Black    Maroon/Charcoal/Black    Maroon/White/Black    Navy/White/Red    Orange/Charcoal/Black    Orange/White/Black    Purple/Charcoal/Black    Purple/White/Black    Red/Charcoal/Black  
 Red/White/Black    Red/White/Navy    Red/White/Royal    Royal/Charcoal/Black    Royal/White/Black    Royal/White/Red    Vegas/White/Black    Vegas/White/Navy  
 White/Black/Orange    White/Black/Red    White/Col Blue/Navy    White/Navy/Red    White/Neon Green/Navy    White/Neon Yellow/Dark Green    White/Col Blue/Red    White/Dark Green/Red    White/Royal/Red    White/Neon Orange/Royal



# 165 PULSE/MESH R-FLEX

**FIT:** R-FLEX  
**SIZE:** XS-SM (6 $\frac{1}{2}$ -7), SM-MD (7-7 $\frac{1}{4}$ ), LG-XL (7 $\frac{3}{8}$ -7 $\frac{7}{8}$ )  
**SHAPE:** MID-PRO  
**FABRIC:** PERFORMANCE STRETCH/POLY MESH  
**VISOR:** UFORM  
**SWEATBAND:** COMFORT STRETCH  
**MSRP:** \$14.00

**PULSE**



**SPLIT COLORS:** First color is crown front, visor, and eyelets. Second color is crown back panels. Third color is crown piping, button, and visor insert. Undervisor is charcoal.



# MODEL 185 TWILL R-FLEX

MSRP: \$11.50

**FIT:** R-FLEX | **SIZE:** XS-SM (6 $\frac{1}{2}$ -7), SM-MD (7-7 $\frac{1}{4}$ ), LG-XL (7 $\frac{3}{8}$ -7 $\frac{7}{8}$ ) | **SHAPE:** MID-PRO | **FABRIC:** COTTON-POLY STRETCH | **VISOR:** PRECURVED | **SWEATBAND:** COMFORT STRETCH



**SOLID COLORS:** Undervisor is grey.



**COMBINATION COLORS:** First color is crown and eyelets. Second color is the visor and button. Eyelets on white crowns match the visor and button. Undervisor is grey.



**ALTERNATE COLORS:** First color is crown front panels. Second color is the crown back panels, visor, eyelets, and button. White front panels have white eyelets. Undervisor is grey.





ON-FIELD

MODEL **414** PRO MESH ADJUSTABLE

MSRP: \$11.50

FIT: HOOK-AND-LOOP BACKSTRAP | SIZE: SM (6<sup>7</sup>/<sub>8</sub>-7<sup>1</sup>/<sub>4</sub>), MD-LG (7-7<sup>3</sup>/<sub>4</sub>) | SHAPE: MID-PRO | FABRIC: PRO MESH | VISOR: PRECURVED | SWEATBAND: PRO TWILL



MATCHING VISOR 740 ON PAGE 46.

**SOLID COLORS:** Undervisor is grey.



**COMBINATION COLORS:** First color is crown and eyelets. Second color is visor and button. Eyelets on white crowns match the visor and button. Undervisor is grey.



MODEL **495** PRO MESH R-FLEX

MSRP: \$12.50

FIT: R-FLEX | SIZE: XS-SM (6<sup>1</sup>/<sub>2</sub>-7), SM-MD (7-7<sup>1</sup>/<sub>4</sub>), LG-XL (7<sup>3</sup>/<sub>8</sub>-7<sup>5</sup>/<sub>8</sub>) | SHAPE: MID-PRO | FABRIC: PRO MESH STRETCH | VISOR: PRECURVED | SWEATBAND: COMFORT STRETCH



**SOLID COLORS:** Undervisor is grey.



**COMBINATION COLORS:** First color is crown and eyelets. Second color is visor and button. Eyelets on white crowns match the visor and button. Undervisor is grey.



**ALTERNATE COLORS:** First color is crown front panels. Second color is the crown back panels, visor, eyelets, and button. White front panels have white eyelets. Undervisor is grey.





# 212 PRO TWILL SNAPBACK

**FIT:** ADJUSTABLE SNAPBACK  
**SIZE:** SM (6<sup>7/8</sup>-7<sup>1/8</sup>), MD-LG (7-7<sup>3/4</sup>)  
**SHAPE:** MID-PRO  
**FABRIC:** POLY-COTTON BLEND  
**VISOR:** PRECURVED  
**SWEATBAND:** COTTON  
**MSRP:** \$5.50



**SOLID COLORS:** Undervisor is grey.



**COMBINATION COLORS:** First color is crown. Second color is the visor, eyelets and button. Undervisor is grey.



# MODEL 214 PRO TWILL HOOK-AND-LOOP

MSRP: \$6.00

**FIT:** HOOK-AND-LOOP | **SIZE:** SM (6<sup>7/8</sup>-7<sup>1/8</sup>), MD-LG (7-7<sup>3/4</sup>) | **SHAPE:** MID-PRO | **FABRIC:** POLY-COTTON BLEND | **VISOR:** PRECURVED | **SWEATBAND:** COTTON



**SOLID COLORS:** Undervisor is grey.





# SIDELINE

Rep your squad anywhere and everywhere.

## 163 LASER CUT FIVE PANEL TRUCKER

FIT: ADJUSTABLE SNAPBACK  
 SHAPE: MID-PRO  
 FABRIC: TWILL/POLY MESH  
 VISOR: PRECURVED  
 SWEATBAND: COTTON  
 MSRP: \$12.00

**NEW**

AVAILABLE MARCH 2018



**TRI COLORS:** First color is crown front panels, visor, and button. Second color is crown back mesh panels. Third color is underlay and undervisor.



Black/Charcoal/Orange



Black/Charcoal/Red



Charcoal/Light Grey/Light Grey



Kelly/White/Yellow



Navy/White/Red



Royal/White/Red

## 174 PERFORMANCE TRUCKER

FIT: ADJUSTABLE SNAPBACK  
 SHAPE: CASUAL STRUCTURED  
 FABRIC: PTS LITE/SPORT MESH  
 VISOR: PRECURVED  
 SWEATBAND: STAY-DRI PERFORMANCE  
 MSRP: \$13.00

**NEW**

AVAILABLE MARCH 2018



**COLORS:** First color is crown, visor, eyelets, undervisor, and button. Second color is crown back mesh panels. Backstrap is two color, excluding Charcoal/Charcoal style.



Black/White



Charcoal/Charcoal



Dark Green/White



Navy/White



Red/White



Royal/White



# 439 TRIPLE COLOR R-FLEX

R-FLEX  
 SIZE: SM-MD (7-7¼), LG-XL (7½-7¾)  
 SHAPE: MID-PRO  
 FABRIC: NYLON BLEND STRETCH  
 VISOR: PRECURVED  
 SWEATBAND: COMFORT STRETCH  
 MSRP: \$14.50



**COLORS:**



# MODEL 402 R-ACTIVE LITE W/ CONTRAST PIPING

MSRP: \$14.50

FIT: HOOK-AND-LOOP | SHAPE: CASUAL STRUCTURED | FABRIC: LTWT PERFORMANCE | VISOR: PRECURVED | SWEATBAND: STAY-DRI



**COLORS:** First color is crown, visor, undervisor, eyelets, and button. Second color is crown and visor piping.





# 810 WIDE BRIM SUN HAT

**FIT:** ONE SIZE FITS MOST  
**SHAPE:** WIDE BRIM BUCKET  
**FABRIC:** LIGHTWEIGHT PERFORMANCE  
**VISOR:** 2 1/2" BRIM  
**SWEATBAND:** STAY-DRI PERFORMANCE  
**MSRP:** \$28.00



**SOLID COLORS:** All colorways have charcoal eyelets, undervisor, and edge trimming on brim.



# MODEL 177 STREAK CAMO

MSRP: \$13.50

**FIT:** ADJ. HOOK-AND-LOOP | **SHAPE:** CASUAL STRUCTURED | **FABRIC:** POLY-COTTON | **VISOR:** PRECURVED | **SWEATBAND:** STAY-DRI



**COLORS:** Undervisor is charcoal.



# MODEL 275 CHARCOAL FRONT W/CONTRAST STITCHING

MSRP: \$9.30

**FIT:** ADJ. HOOK-AND-LOOP | **SHAPE:** CASUAL STRUCTURED | **FABRIC:** 100% COTTON TWILL | **VISOR:** PRECURVED | **SWEATBAND:** COTTON



**COLORS:** First color is crown front panels, front eyelets, and visor. Second color is crown back panels, visor trim, button, back eyelets, and backstrap. All colorways have white contrast stitching. Undervisor is charcoal.





MODEL **112P** PRINTED TRUCKER

MSRP: \$10.00

FIT: ADJ. SNAPBACK | SHAPE: MID-PRO | FABRIC: TWILL/POLY MESH | VISOR: PRECURVED | SWEATBAND: COTTON



**DIGITAL CAMO COLORS:** First color is crown and visor camo, button, eyelets, undervisor, backstrap, and contrast stitching on back panels. Second color is crown back mesh.



Black/Charcoal    Navy/Charcoal    Red/Charcoal    Royal/Charcoal

**STREAK CAMO COLORS:** First color is crown and visor camo, button, eyelets, undervisor, backstrap, and contrast stitching on back panels. Second color is crown back mesh. Backstrap is two color on Streak Camo.



Black/Charcoal    Charcoal/White    Dark Green/Charcoal    Navy/White

(VIEW ALL COLORWAYS ON PAGE 17)

MODEL **178** DRYVE/CARBON FIBER

MSRP: \$15.50

FIT: ADJ. HOOK-AND-LOOP | SHAPE: CASUAL STRUCTURED | FABRIC: PERF MICRO MESH/POLYESTER | VISOR: PRECURVED | SWEATBAND: STAY-DRI



**COLORS:** All colorways have sublimated back side, and visor panels with black button, piping on front panels and visor. Undervisor is charcoal.



Black    Cardinal    Charcoal    Dark Green



Gold    Maroon    Orange    Purple



Red    Royal

MODEL **245** CHAMPIONS CAP

MSRP: \$12.00

FIT: ADJ. HOOK-AND-LOOP | SHAPE: CASUAL STRUCTURED | FABRIC: 100% COTON TWILL | VISOR: PRECURVED | SWEATBAND: COTTON



**COLOR:** Screen printed champions watermark on front panels. Champions woven label on back strap. Undervisor is charcoal.



# MESH BACK

Classic Trucker Caps, on-trend styles, and performance mesh.

## 112 TRUCKER

**FIT:** ADJUSTABLE SNAPBACK  
**SHAPE:** MID-PRO  
**FABRIC:** TWILL/POLY MESH  
**VISOR:** PRECURVED  
**SWEATBAND:** COTTON  
**MSRP:** \$7.50



**TRI-COLORS:** First color is crown front panels and eyelets. Second color is crown back mesh panels, backstrap, and contrast stitching on front panels, visor, and undervisor. Third color is visor and button.



**ALTERNATE COLORS:** First color is crown front panels and eyelets. Second color is back mesh panels, backstrap, visor, undervisor, button, and contrast stitching on crown front panels.



**SOLID COLORS:** Undervisor is cap color.





# 112P PRINTED TRUCKER

**FIT:** ADJUSTABLE SNAPBACK  
**SHAPE:** MID-PRO  
**FABRIC:** TWILL/POLY MESH  
**VISOR:** PRECURVED  
**SWEATBAND:** COTTON  
**MSRP:** \$10.00



**PLAID COLORS:** First color is crown and visor plaid pattern, button, eyelets, undervisor, backstrap, and contrast stitching on back panels. Second color is accent in plaid pattern. Third color is crown back mesh.



**ISLAND PRINT COLORS:** First color is crown and visor island print, button, eyelets, undervisor, backstrap, and contrast stitching on back panels. Second color is crown back mesh.



**STREAK CAMO COLORS:** First color is crown and visor camo, button, eyelets, undervisor, backstrap, and contrast stitching on back panels. Second color is crown back mesh. **Backstrap is two color on Streak Camo.**



**KRYPTEK CAMO COLORS:** First color is crown and visor camo, button, and eyelets. Second color is crown back mesh and contrast stitching on front panels and visor. **Kryptek Camo 100% Polyester.**



**REALTREE CAMO COLORS:** First color is crown and visor camo, button, and eyelets. Second color is crown back mesh and contrast stitching on front panels and visor.



**MILITARY CAMO COLORS:** First color is crown and visor camo, button, eyelets, undervisor, backstrap, and contrast stitching on back panels. Second color is crown back mesh.



+ SMALL/LADIES SIZE ONLY.

# MODEL 112FP FIVE PANEL TRUCKER **NEW** AVAILABLE MARCH 2018

MSRP: \$7.50

**FIT:** ADJ. SNAPBACK | **SHAPE:** MID-PRO | **FABRIC:** TWILL/POLY MESH | **VISOR:** PRECURVED | **SWEATBAND:** COTTON



**SPLIT COLORS:** First color is crown front panels, eyelets, visor, undervisor, and button. Second color is crown back mesh panels, backstrap, and contrast stitching on front panels and visor.





# 115 LOW PRO TRUCKER

**FIT:** ADJUSTABLE SNAPBACK  
**SIZE:** SM, MD-LG  
**SHAPE:** CASUAL STRUCTURED  
**FABRIC:** TWILL/POLY MESH  
**VISOR:** PRECURVED  
**SWEATBAND:** COTTON  
**MSRP:** \$8.00



**SOLID COLORS:** Undervisor is cap color.



Black  
NEW Loden

**TRI-COLORS:** First color is crown front panels and eyelets. Second color is back mesh panels and backstrap. Third color is visor and button.



Blue Teal/Birch/Navy Heather Grey/Birch/Amber Gold

**SPLIT COLORS:** First color is crown front panels, eyelets, visor, undervisor, and button. Second color is crown back mesh panels, and backstrap.



# MODEL 115CH LOW PRO HEATHER TRUCKER

MSRP: \$10.50

**FIT:** ADJ. SNAPBACK | **SIZE:** SM, MD-LG | **SHAPE:** CASUAL STRUCTURED | **FABRIC:** COTTON-POLY JERSEY/POLY MESH | **VISOR:** PRECURVED | **SWEATBAND:** COTTON



**SPLIT COLORS:** First color is crown front panels, eyelets, visor, undervisor, and button. Second color is crown back mesh panels, and backstrap.





# 111 GARMENT WASHED TRUCKER

**FIT:** ADJUSTABLE SNAPBACK  
**SHAPE:** RELAXED UNSTRUCTURED  
**FABRIC:** TWILL/POLY MESH  
**VISOR:** PRECURVED  
**SWEATBAND:** COTTON  
**MSRP:** \$9.50



**TRI-COLORS:** First color is crown front panels and eyelets. Second color is crown back mesh panels, backstrap, and contrast stitching on front panels and visor. Third color is visor and button.



Col Blue/Charcoal/Navy   Red/Charcoal/Black   Stone/Black/Dark Green   Stone/Black/Orange   Stone/Black/Red   Stone/Black/Royal   White/Charcoal/Black

**SPLIT COLORS:** First color is crown front panels, eyelets, visor, undervisor, and button. Second color is crown back mesh panels, backstrap, and contrast stitching on front panels and visor.



Black/Charcoal   Black/Khaki   Black/White   Brown/Khaki   Capt Blue/Brown   Charcoal/Neon Yellow   Charcoal/White   Col Blue/Khaki   Dark Green/White   Driftwood/Khaki  
 Kelly/White   Mango/Brown   Navy/Khaki   Navy/White   Orange/White   Pink/White+   Purple/White   Red/Charcoal   Red/White   Royal/Charcoal  
 Royal/White   Texas Orange/Khaki

+ SMALL/LADIES SIZE ONLY.

# MODEL 111P GARMENT WASHED PRINTED TRUCKER

MSRP: \$10.00

**FIT:** ADJ. SNAPBACK | **SHAPE:** RELAXED UNSTRUCTURED | **FABRIC:** TWILL/POLY MESH | **VISOR:** PRECURVED | **SWEATBAND:** COTTON



**CAMO COLORS:** First color is crown and visor camo, button, and eyelets. Second color is crown back mesh. Contrast stitching on back panels.



AP Pink/White+   Digital Camo/Light Green   Highlander/Brown   Max1/Brown  
 Max5/Buck   Typhon/Black   Xtra/Brown   Green Camo/Black

+ SMALL/LADIES SIZE ONLY.



MESH BACK

# 110 TRUCKER R-FLEX



**FIT:** R-FLEX  
**SIZE:** SM-MD (7-7 1/2), LG-XL (7 3/8-7 5/8)  
**SHAPE:** MID-PRO  
**FABRIC:** TWILL/STRETCH POLY MESH  
**VISOR:** PRECURVED  
**SWEATBAND:** COMFORT STRETCH  
**MSRP:** \$10.50

**SPLIT COLORS:** First color is crown front panels, eyelets, visor, undervisor, button, and contrast stitching on back panels. Second color is crown back mesh panels.



**SOLID COLORS:** Undervisor is cap color.



**ALTERNATE COLORS:** First color is crown front panels and eyelets. Second color is crown back mesh panels, visor, undervisor, and button.



# MODEL 222 R-ACTIVE LITE/AIRMESH TRUCKER

MSRP: \$12.00

**FIT:** ADJ. HOOK-AND-LOOP | **SHAPE:** CASUAL STRUCTURED | **FABRIC:** LTWT PERFORMANCE/AIRMESH | **VISOR:** PRECURVED | **SWEATBAND:** STAY-DRI



**SOLID COLORS:** Undervisor is cap color.



**SPLIT COLORS:** First color is crown front panels, eyelets, visor, undervisor, backstrap, and button. Second color is crown back mesh panels.





MODEL **113** FOAMIE TRUCKER

MSRP: \$10.00

FIT: ADJ. SNAPBACK | SHAPE: STRUCTURED PINCH | FABRIC: FOAM/POLY MESH | VISOR: FLAT | SWEATBAND: COTTON



**SOLID COLORS:** Undervisor is cap color.



**ALTERNATE COLORS:** First color is crown front panels. Second color is back mesh panels, visor, visor cord, backstrap, and button.



**TRI-COLORS:** First color is crown front panels. Second color is back mesh panels. Third color is visor, visor cord, backstrap, and button.



MODEL **213** LOW PRO FOAMIE TRUCKER **NEW**

AVAILABLE MARCH 2018

MSRP: \$10.00

FIT: ADJ. SNAPBACK | SHAPE: CASUAL STRUCTURED | FABRIC: FOAM/POLY MESH | VISOR: PRECURVED | SWEATBAND: COTTON



**ALTERNATE COLORS:** First color is crown front panels. Second color is back mesh panels, visor, visor cord, backstrap, and button.



**SPLIT COLORS:** First color is crown front panels, visor, and button. Second color is crown back mesh panels, and backstrap. Third color is visor cord.



MODEL **165** PULSE/MESH R-FLEX

MSRP: \$14.00

FIT: R-FLEX | SIZE: XS-SM (6 7/8-7), SM-MD (7 7/8-7 3/4), LG-XL (7 3/8-7 3/4) | SHAPE: MID-PRO | FABRIC: PERF STRETCH/STRETCH POLY MESH | VISOR: UFORM | SWEATBAND: COMFORT STRETCH



**COLORS:** First color is crown front panels, eyelets, and visor. Second color is crown back mesh panels. Third color is visor insert, crown piping, and button. Undervisor is charcoal.





# 172 PULSE SPORTMESH R-FLEX

**FIT:** R-FLEX  
**SIZE:** XS-SM (6<sup>7/8</sup>-7), SM-MD (7-7<sup>1/4</sup>), LG-XL (7<sup>3/8</sup>-7<sup>7/8</sup>)  
**SHAPE:** MID-PRO  
**FABRIC:** PERFORMANCE STRETCH/SPORT MESH  
**VISOR:** PRECURVED  
**SWEATBAND:** COMFORT STRETCH  
**MSRP:** \$13.50

**PULSE** 



**CONTRASTING COLORS:** First color is cap and undervisor. Second color is crown piping, button, and sandwich visor insert.



**COMBINATION COLORS:** First color is crown, sandwich visor insert, and eyelets. Second color is visor, undervisor, crown piping, and button.



**SPLIT COLORS:** First color is crown front, button, eyelets, visor, and undervisor. Second color is crown back panels, crown piping, sandwich visor insert, and contrast stitching on visor and crown front panels.



**TRI-COLORS:** First color is crown front, eyelets, sandwich visor insert, and contrast stitching on crown back panels. Second color is crown back panels. Third color is crown piping, button, visor, and undervisor. White contrast stitching on visor and crown front panels. Charcoal back caps have white contrast stitching on visor and crown. White front caps have white contrast stitching on visor and crown back panels.





MODEL **511** WOOL BLEND FLATBILL TRUCKER

MSRP: \$11.00

FIT: ADJ. SNAPBACK | SHAPE: HI-PRO | FABRIC: ACRYLIC-WOOL BLEND/POLY MESH | VISOR: FLAT | SWEATBAND: COTTON



**SPLIT COLORS:** First color is crown front panels, eyelets, visor, undervisor, backstrap, and button. Second color is crown back mesh panels.



MODEL **168** 7 PANEL TRUCKER

MSRP: \$10.50

FIT: ADJ. SNAPBACK | SHAPE: HI-PRO 7 PANEL | FABRIC: TWILL/POLY MESH | VISOR: FLAT | SWEATBAND: COTTON



**SPLIT COLORS:** First color is crown front panel, crown top panels, visor, undervisor, and button. Second color is crown back mesh panels and backstrap.



**SOLID, TRI, AND ALTERNATE COLORS:**



MODEL **162** STRIPED TRUCKER FLATBILL

MSRP: \$12.00

FIT: ADJ. SNAPBACK | SHAPE: MID-PRO | FABRIC: NYLON BLEND/POLY MESH | VISOR: FLAT | SWEATBAND: COTTON



**COLORS:** Color is crown front stripes, button, and backstrap.





# LIFESTYLE ACTIVE

Performance inspired caps  
built for motion.

## 227 TECH MESH



**FIT:** D-RING ADJUSTABLE HOOK-AND-LOOP  
**SIZE:** SM-MD, LG-XL  
**SHAPE:** CASUAL STRUCTURED  
**FABRIC:** LTWT PERFORMANCE/TECH MESH  
**VISOR:** PRECURVED  
**SWEATBAND:** STAY-DRI PERFORMANCE  
**MSRP:** \$17.50



**COLORS:** First color is crown front, visor, button, back stripe, and backstrap. Second color is back mesh panels.



HOOK & LOOP WITH ELASTIC D-RING  
BUILT FOR COMFORT AND MOTION

## MODEL 221 LASER VENTED R-ACTIVE LITE

MSRP: \$15.50

**FIT:** D-RING ADJ. HOOK-AND-LOOP | **SIZE:** SM-MD, LG-XL | **SHAPE:** RELAXED UNSTRUCTURED | **FABRIC:** LTWT PERFORMANCE | **VISOR:** PRECURVED | **SWEATBAND:** STAY-DRI



**COLORS:** First color is crown, visor, button, back stripe, and backstrap. Second color is visor and back panel binding.





MODEL **225** STRUCTURED R-ACTIVE LITE

MSRP: \$10.50

FIT: ADJ. HOOK-AND-LOOP | SHAPE: CASUAL STRUCTURED | FABRIC: LTWT PERFORMANCE | VISOR: PRECURVED | SWEATBAND: STAY-DRI



COLORS: Undervisor is charcoal.



MATCHING VISOR 160 ON PAGE 48.

MODEL **220** UNSTRUCTURED R-ACTIVE LITE

MSRP: \$12.00

FIT: D-RING ADJ. HOOK-AND-LOOP | SHAPE: RELAXED UNSTRUCTURED | FABRIC: LTWT PERFORMANCE | VISOR: PRECURVED | SWEATBAND: STAY-DRI



COLORS: Undervisor is charcoal.



KASITY, CUSTOMER SERVICE | 221 LASER VENTED R-ACTIVE LITE





MODEL **402** R-ACTIVE LITE W/ CONTRAST PIPING

MSRP: \$14.50

FIT: ADJ. HOOK-AND-LOOP | SHAPE: CASUAL STRUCTURED | FABRIC: LTWT PERFORMANCE | VISOR: PRECURVED | SWEATBAND: STAY-DRI



**SOLID COLORS:** First color is crown, visor, undervisor, eyelets and button. Second color is crown and visor piping.



MODEL **222** R-ACTIVE LITE/AIRMESH TRUCKER

MSRP: \$12.00

FIT: ADJ. HOOK-AND-LOOP | SHAPE: CASUAL STRUCTURED | FABRIC: LTWT PERFORMANCE/AIRMESH | VISOR: PRECURVED | SWEATBAND: STAY-DRI



**COLORS:** Undervisor is cap color.



**COLORS:** First color is solid front panels, button, backstrap, visor and undervisor. Second color is back panels.



DAN, ART | 227 TECH MESH



MODEL **155** R-ACTIVE LITE OUTDOORS CAP

MSRP: \$11.50

FIT: D-RING ADJ. HOOK-AND-LOOP | SHAPE: RELAXED UNSTRUCTURED | FABRIC: LTWT PERFORMANCE | VISOR: PRECURVED | SWEATBAND: STAY-DRI



**COLORS:** Second color is the undervisor, wrap, eyelets, and trim features.



MODEL **158** LASER VENTED RUNNING CAP

MSRP: \$16.00

FIT: D-RING ADJ. HOOK-AND-LOOP | SHAPE: 5 PANEL UNSTRUCTURED | FABRIC: LTWT PERFORMANCE | VISOR: PRECURVED | SWEATBAND: STAY-DRI



**SOLID COLORS:** Trim color is charcoal. Trim color on charcoal cap is black. Undervisor is charcoal.



MATCHING VISOR 159 ON PAGE 48.

MODEL **150** MESH PANEL RUNNING CAP

MSRP: \$10.50

FIT: ADJ. HOOK-AND-LOOP | SHAPE: 5 PANEL UNSTRUCTURED | FABRIC: LTWT PERFORMANCE | VISOR: PRECURVED | SWEATBAND: STAY-DRI



**SOLID COLORS:** First color is crown and top visor. Second color is the undervisor, visor wrap, back strap and trim features.





# LIFESTYLE STRUCTURED

Traditional fit meets contemporary style.

## 510 WOOL FLATBILL SNAPBACK

**FIT:** ADJUSTABLE SNAPBACK  
**SHAPE:** HI-PRO  
**FABRIC:** ACRYLIC-WOOL BLEND  
**VISOR:** FLAT  
**SWEATBAND:** COTTON  
**MSRP:** \$12.00



**SOLID COLORS:** Undervisor is grey.



**COMBINATION COLORS:** First color is crown and eyelets. Second color is visor and button. Undervisor is grey.





# 312 TWILL BACK TRUCKER

FIT: ADJUSTABLE SNAPBACK  
 SHAPE: MID-PRO  
 FABRIC: POLY-COTTON TWILL  
 VISOR: PRECURVED  
 SWEATBAND: COTTON  
 MSRP: \$7.50



**COLORS:** First color is crown front panels, button, visor and undervisor. Second color is back panels and contrast stitching on front panels and visor.



**TRI-COLORS:** First color is crown front panels. Second color is back panels and contrast stitching on front panels and visor. Third color is visor, undervisor, and button.



# MODEL 203 VINTAGE BRUSHED CHINO

MSRP: \$8.00

FIT: ADJ. HOOK-AND-LOOP | SHAPE: CASUAL STRUCTURED | FABRIC: BRUSHED CHINO TWILL | VISOR: PRECURVED | SWEATBAND: COTTON



**SOLID COLORS:** Undervisor is cap color.



**COMBINATION COLORS:** First color is crown and eyelets. Second color is visor, undervisor, and button.





# 265 CHINO TWILL WAVE VISOR

**FIT:** ADJUSTABLE HOOK-AND-LOOP  
**SHAPE:** CASUAL STRUCTURED  
**FABRIC:** 100% COTTON TWILL  
**VISOR:** PRECURVED  
**SWEATBAND:** COTTON  
**MSRP:** \$9.00



**SOLID COLORS:** First color is cap and undervisor. Second color is contrasting stitching, eyelets, and wave visor insert.



Black/White



Brown/White



Cardinal/White



Charcoal/White



Driftwood/White



Dark Green/White



Lime/White



Navy/White



Purple/White



Red/White



Royal/White



Texas Orange/White



Vegas Gold/Black

## MODEL R70 R-SERIES STRUCTURED TWILL R-FLEX

MSRP: \$10.50

**FIT:** R-FLEX | **SIZE:** ONE SIZE FITS MOST | **SHAPE:** CASUAL STRUCTURED | **FABRIC:** R-SERIES COTTON-POLY STRETCH | **VISOR:** PRECURVED | **SWEATBAND:** COMFORT STRETCH



**SOLID COLORS:** Undervisor is cap color.



Black



Navy



Stone



White



# R75 R-SERIES STRUCTURED TWILL

**FIT:** ADJUSTABLE HOOK-AND-LOOP  
**SHAPE:** CASUAL STRUCTURED  
**FABRIC:** R-SERIES 100% COTTON TWILL  
**VISOR:** PRECURVED  
**SWEATBAND:** COTTON  
**MSRP:** \$5.50



**SOLID COLORS:** Undervisor is cap color.



Black



Cardinal



Charcoal



Dark Green



Driftwood



Kelly



Maroon



Navy



Orange



Purple



Red



Royal



Stone



White

# MODEL R78 R-SERIES STRUCTURED SANDWICH VISOR

MSRP: \$5.90

**FIT:** ADJ. HOOK-AND-LOOP | **SHAPE:** CASUAL STRUCTURED | **FABRIC:** R-SERIES 100% COTTON TWILL | **VISOR:** PRECURVED | **SWEATBAND:** COTTON



**SOLID COLORS:** First color is crown, button, visor, and undervisor. Second color is sandwich visor insert and eyelet color.



Black/White



Cardinal/White



Charcoal/White



Dark Green/White



Driftwood/Black



Kelly/White



Maroon/White



Navy/White



Orange/White



Purple/White



Red/White



Royal/White



Stone/Black



White/Black



# LIFESTYLE

## UNSTRUCTURED

Relaxed fits, dad hats, and more.

### 320 WASHED CHINO

**FIT:** ADJ. CLOTH BACKSTRAP WITH COMFORT BUCKLE  
**SIZE:** SM (6<sup>7</sup>/<sub>8</sub>-7<sup>1</sup>/<sub>8</sub>), MD-LG (7-7<sup>3</sup>/<sub>4</sub>)  
**SHAPE:** RELAXED UNSTRUCTURED  
**FABRIC:** HEAVYWEIGHT CHINO TWILL  
**VISOR:** PRECURVED  
**SWEATBAND:** COTTON  
**MSRP:** \$10.00



**COLORS:** Undervisor is cap color.



**COLORS:** Undervisor is cap color.



### MODEL 320T TODDLER CHINO

**FIT:** ELASTIC BACKSTRAP  
**SHAPE:** RELAXED UNSTRUCTURED  
**FABRIC:** HEAVYWEIGHT CHINO TWILL  
**VISOR:** PRECURVED  
**SWEATBAND:** COTTON  
**MSRP:** \$8.00



### MODEL 321 HAND DIPPED TIE-DYE NEW AVAILABLE APRIL 2018

**MSRP:** \$14.00

**FIT:** ADJ. CLOTH BACKSTRAP WITH COMFORT BUCKLE | **SHAPE:** RELAXED UNSTRUCTURED | **FABRIC:** HEAVYWEIGHT CHINO TWILL | **VISOR:** PRECURVED | **SWEATBAND:** COTTON

**COLORS:** Undervisor is cap color.





MODEL **325** WASHED CHINO SANDWICH VISOR

MSRP: \$10.50

FIT: ADJ. HOOK-AND-LOOP | SHAPE: RELAXED UNSTRUCTURED | FABRIC: HEAVYWEIGHT CHINO TWILL | VISOR: PRECURVED | SWEATBAND: COTTON



**COLORS:** First color is crown, visor, undervisor, button and back strap. Second color is the stitching and sandwich visor insert.



**SPLIT COLORS:** First color is front panels, visor, undervisor and button. Second color is the back panels, stitching and sandwich visor insert color.



MODEL **330** WASHED CHINO POLO

MSRP: \$10.00

FIT: ADJ. CLOTH HIDEAWAY BACKSTRAP | SHAPE: RELAXED UNSTRUCTURED | FABRIC: HEAVYWEIGHT CHINO TWILL | VISOR: PRECURVED | SWEATBAND: COTTON



**COLORS:** Undervisor is Stone.



**COLORS:** Undervisor is Navy.



MODEL **322** WASHED CHINO CHARCOAL

MSRP: \$10.00

FIT: ADJ. HOOK-AND-LOOP | SHAPE: RELAXED UNSTRUCTURED | FABRIC: HEAVYWEIGHT CHINO TWILL | VISOR: PRECURVED | SWEATBAND: COTTON



**COLORS:** First color is front panel. Second color is crown back, upper visor, and back strap. Third color is button, eyelets, undervisor, edge wrap and sweatband. All caps have white contrast stitching.



**ALTERNATE COLORS:** First color is front panel, button, eyelets, undervisor, edge wrap and sweatband. Second color is crown back, upper visor and back strap. Third color is contrast stitching.





MODEL **380** GARMENT DYED/WASHED

MSRP: \$11.00

FIT: ADJ. CLOTH HIDEAWAY BACKSTRAP  
 SHAPE: RELAXED UNSTRUCTURED  
 FABRIC: HEAVYWEIGHT CHINO TWILL  
 VISOR: PRECURVED  
 SWEATBAND: COTTON



COLORS: Undervisor is cap color.



MODEL **236** CHINO W/ LEATHER VISOR

MSRP: \$16.00

FIT: ADJ. CLOTH HIDEAWAY BACKSTRAP  
 SHAPE: RELAXED UNSTRUCTURED  
 FABRIC: BRUSHED CHINO TWILL  
 VISOR: PRECURVED  
 SWEATBAND: COTTON



COLORS: First color is crown, button, and eyelets. Second color is visor and undervisor.



MODEL **232** BRUSHED CHINO

MSRP: \$8.00

FIT: ADJ. CLOTH HIDEAWAY BACKSTRAP  
 SHAPE: RELAXED UNSTRUCTURED  
 FABRIC: BRUSHED CHINO TWILL  
 VISOR: PRECURVED  
 SWEATBAND: COTTON



COLORS: Undervisor is cap color.



COMBINATION COLORS: First color is crown. Second color is visor, undervisor, and button.



MODEL **192** WASHED CADET STRAPBACK

MSRP: \$12.50

FIT: ADJ. HOOK-AND-LOOP  
 SHAPE: CADET UNSTRUCTURED  
 FABRIC: HEAVYWEIGHT CHINO TWILL  
 VISOR: SPORT PRECURVED  
 SWEATBAND: COTTON



COLORS: Undervisor is cap color. Camo undervisor is khaki. Digital camo undervisor is driftwood.



+ SMALL/LADIES SIZE ONLY.

\* AVAILABLE IN SMALL/LADIES SIZE.



MODEL **R55** R-SERIES GARMENT WASHED TWILL

MSRP: \$5.70

FIT: ADJ. CLOTH HIDEAWAY BACKSTRAP | SHAPE: RELAXED UNSTRUCTURED | FABRIC: R-SERIES 100% COTTON TWILL | VISOR: PRECURVED | SWEATBAND: COTTON



COLORS: Undervisor is cap color.



MODEL **R65** R-SERIES UNSTRUCTURED TWILL

MSRP: \$5.00

FIT: ADJ. HOOK-AND-LOOP | SHAPE: RELAXED UNSTRUCTURED | FABRIC: R-SERIES 100% COTTON TWILL | VISOR: PRECURVED | SWEATBAND: COTTON



COLORS: Undervisor is cap color.



MODEL **R66** R-SERIES UNSTRUCTURED SANDWICH VISOR

MSRP: \$6.00

FIT: ADJ. CLOTH HIDEAWAY BACKSTRAP | SHAPE: RELAXED UNSTRUCTURED | FABRIC: R-SERIES 100% COTTON TWILL | VISOR: PRECURVED | SWEATBAND: COTTON



COLORS: Second color is sandwich visor. Undervisor is cap color.





# STREET NO LABEL

On-trend styles designed to be a blank canvas for brand identity.

## 951 6 PANEL WOOL SNAPBACK

FIT: ADJUSTABLE PLASTIC SNAPBACK

SHAPE: HI-PRO

FABRIC: WOOL BLEND

VISOR: FLAT

SWEATBAND: COTTON

MSRP: \$12.00



**SOLID COLORS:** Undervisor is cap color. (Y) = Available in youth sizes.



**COMBINATION COLORS:** First color is crown and eyelets. Second color is button and visor. \*Excludes Heather Grey/Black and Navy/Aurora Red.



## MODEL 952 CLASSIC WOOL TRUCKER SNAPBACK

MSRP: \$11.00

FIT: ADJ. PLASTIC SNAPBACK | SHAPE: HI-PRO | FABRIC: WOOL BLEND/MESH | VISOR: FLAT | SWEATBAND: COTTON



**SOLID COLORS:** Undervisor is cap color.



Black

**SPLIT COLORS:** First color is crown, visor, button and eyelets. Second color is mesh back panels and backstrap. (Y) = Available in youth sizes.



Black/White | Brown/Khaki | Green Camo/Black | Heather Charcoal/White (Y) | Heather Grey/Black

**TRI-COLORS:** First color is crown and eyelets. Second color is mesh back panels and backstrap. Third color is visor and button.



Heather Grey/Birch/Biscuit



# 955 PINCH FRONT STRUCTURED SNAPBACK

**FIT:** ADJUSTABLE PLASTIC SNAPBACK  
**SHAPE:** STRUCTURED PINCH  
**FABRIC:** TWILL  
**VISOR:** FLAT  
**SWEATBAND:** COTTON  
**MSRP:** \$9.80



**SOLID COLORS:** Undervisor is cap color. (Y) = Available in youth sizes.



**COMBINATION COLORS:** First color is crown. Second color is visor and button.



# MODEL 925 PREMIUM COTTON DAD HAT

MSRP: \$13.00

**FIT:** ADJ. CLOTH BACKSTRAP W/ COMFORT BUCKLE | **SHAPE:** RELAXED UNSTRUCTURED | **FABRIC:** PREMIUM COTTON TWILL | **VISOR:** PRECURVED | **SWEATBAND:** COTTON



**SOLID COLORS:** Undervisor is cap color. (Y) = Available in youth sizes.





# 954 FOAMIE TRUCKER

**FIT:** ADJUSTABLE PLASTIC SNAPBACK  
**SHAPE:** STRUCTURED PINCH  
**FABRIC:** FOAM/POLY MESH  
**VISOR:** FLAT  
**SWEATBAND:** COTTON  
**MSRP:** \$10.00



**SOLID COLORS:** Undervisor is cap color.



**ALTERNATE COLORS:** First color is crown front panels. Second color is mesh back panels, visor, visor cord, button, and backstrap. (Y) = Available in youth sizes.



**TRI-COLORS:** First color is crown. Second color is mesh back panels and backstrap. Third color is visor and button.



**SPLIT COLORS:** First color is crown, visor, visor cord, and button. Second color is mesh back panels and backstrap.



# MODEL 953 CORDUROY SNAPBACK

MSRP: \$15.50

**FIT:** ADJ. PLASTIC SNAPBACK | **SHAPE:** HI-PRO | **FABRIC:** CORDUROY | **VISOR:** FLAT | **SWEATBAND:** COTTON



**SOLID COLORS:** Undervisor is cap color.





# 956 GRANDPA PINCH SNAPBACK

FIT: ADJUSTABLE PLASTIC SNAPBACK

SHAPE: FLIP-UP STAY PINCH

FABRIC: NYLON

VISOR: FLAT

SWEATBAND: COTTON

MSRP: \$15.50



**COLORS:** First color is crown, eyelets, visor, button, and backstrap. Second color is visor cord.



Black/Black



Biscuit/Black



Loden/Amber Gold



Navy/Red



Red/White

# 921 MELTON WOOL STRAPBACK

MSRP: \$18.00

FIT: ADJ. LEATHER STRAPBACK | SHAPE: HI-PRO STRUCTURED | FABRIC: MELTON WOOL | VISOR: FLAT | SWEATBAND: COTTON



**SOLID COLORS:** Undervisor is cap color.



Black Heather Grey Navy

**COMBINATION COLORS:** First color is crown. Second color is visor and button.



Heather Grey/Black

JOSH, CUSTOMER SERVICE | 951 6 PANEL WOOL STRAPBACK





# 917 5 PANEL STRAPBACK

**FIT:** ADJUSTABLE NYLON WOVEN STRAPBACK  
**SHAPE:** 5 PANEL STRUCTURED  
**FABRIC:** TWILL  
**VISOR:** FLAT  
**SWEATBAND:** COTTON  
**MSRP:** \$11.20



**SOLID COLORS:** Undervisor is cap color. (Y) = Available in youth sizes.



**COMBINATION COLORS:** First color is crown. Second color is visor.



**QUAD COLORS:** First color is crown front. Second color is crown top. Third color is visor. Fourth color is crown sides.



Teal/Blue Ribbon/Dk  
Cardinal/Birch

# 920 5 PANEL MESH STRAPBACK

MSRP: \$11.60

**FIT:** ADJ. NYLON WOVEN STRAPBACK | **SHAPE:** 5 PANEL STRUCTURED | **FABRIC:** TWILL/POLY MESH | **VISOR:** FLAT | **SWEATBAND:** COTTON



**SOLID COLORS:** Undervisor is cap color.



**TRI-COLORS:** First color is crown front and crown top. Second color is crown sides. Third color is visor.



**QUAD-COLORS:** First color is crown front. Second color is crown top. Third color is crown sides. Fourth color is visor.



# 918 5 PANEL MELTON WOOL STRAPBACK

MSRP: \$18.00

**FIT:** ADJ. LEATHER STRAPBACK | **SHAPE:** 5 PANEL STRUCTURED | **FABRIC:** MELTON WOOL | **VISOR:** FLAT | **SWEATBAND:** COTTON



**SOLID COLORS:** Undervisor is cap color.





# 958 7 PANEL TRUCKER

FIT: ADJUSTABLE PLASTIC SNAPBACK  
 SHAPE: HI-PRO 7 PANEL  
 FABRIC: TWILL/POLY MESH  
 VISOR: FLAT  
 SWEATBAND: COTTON  
 MSRP: \$10.20



**SOLID COLORS:** Undervisor is cap color.  
 (Y) = Available in youth sizes.



Black (Y)

**SPLIT COLORS:** First color is crown front, crown top, visor, and button. Second color is mesh back panels and backstrap.



Charcoal/Old Gold    Pale Khaki/Loden

**TRI-COLORS:**



Black/Green Camo/Loden    Charcoal/Black/Jaffa Orange

**QUAD-COLORS:** First color is crown front. Second color is crown top. Third color is mesh back panels and backstrap. Fourth color is visor.



Yellow/Red/Black/Dark Green

# MODEL 957 7 PANEL TWILL STRAPBACK

MSRP: \$13.00

FIT: ADJ. LEATHER STRAPBACK | SHAPE: HI-PRO 7 PANEL | FABRIC: TWILL | VISOR: FLAT | SWEATBAND: COTTON



**SOLID COLORS:** Undervisor is cap color.



Black    Biscuit    Lodен

**ALTERNATE COLORS:** First color is crown front panel. Second color is crown top, crown back panels, visor, and button. (Y) = Available in youth sizes.



Charcoal/Heather Grey (Y)    Pigeon/Navy

SARAH, CUSTOMER SERVICE | 917 5 PANEL STRAPBACK





# WOMEN

Trending styles and colors with lower profiles and more tailored fits.

## 115 LOW PRO TRUCKER



**FIT:** ADJUSTABLE SNAPBACK  
**SIZE:** SM, MD-LG  
**SHAPE:** CASUAL STRUCTURED  
**FABRIC:** TWILL/POLY MESH  
**VISOR:** PRECURVED  
**SWEATBAND:** COTTON  
**MSRP:** \$8.00

(VIEW ALL COLORWAYS ON PAGE 18)

**SPLIT COLORS:** First color is crown front panels, eyelets, visor, undervisor, and button. Second color is crown back mesh panels, and backstrap.



**SOLID COLORS:** Undervisor is cap color. **TRI-COLORS:** First color is crown front panels and eyelets. Second color is back mesh panels and backstrap. Third color is visor and button.



## MODEL 115CH LOW HEATHER TRUCKER MSRP: \$10.50

**FIT:** ADJ. SNAPBACK  
**SIZE:** SM, MD-LG  
**SHAPE:** CASUAL STRUCTURED  
**FABRIC:** COTTON-POLY JERSEY/POLY MESH  
**VISOR:** PRECURVED  
**SWEATBAND:** COTTON



**SPLIT COLORS:** First color is crown front panels, eyelets, visor, undervisor, and button. Second color is crown back mesh panels and backstrap.



## MODEL 213 LOW PRO FOAMIE TRUCKER MSRP: \$10.00

**FIT:** ADJ. SNAPBACK  
**SHAPE:** CASUAL STRUCTURED  
**FABRIC:** FOAM/POLY MESH  
**VISOR:** PRECURVED  
**SWEATBAND:** COTTON

**NEW**  
 AVAILABLE MARCH 2018



**ALTERNATE COLORS:** First color is crown front panels. Second color is back mesh panels, visor, visor cord, backstrap, and button.



**SPLIT COLORS:** First color is crown front panels, visor, and button. Second color is crown back mesh panels, and backstrap. Third color is visor cord.





MODEL **221** LASER VENTED R-ACTIVE LITE

MSRP: \$15.50

FIT: D-RING ADJ. HOOK-AND-LOOP | SIZE: SM-MD, LG-XL | SHAPE: RELAXED UNSTRUCTURED | FABRIC: LTWT PERFORMANCE | VISOR: PRECURVED | SWEATBAND: STAY-DRI



COLORS:



MODEL **320** WASHED CHINO

MSRP: \$10.00

FIT: ADJ. CLOTH BACKSTRAP WITH COMFORT BUCKLE | SHAPE: RELAXED UNSTRUCTURED | FABRIC: HEAVYWEIGHT CHINO TWILL | VISOR: PRECURVED | SWEATBAND: COTTON  
 SIZE: SM (6 1/2-7 1/4), MD-LG (7-7 3/4)



SOLID COLORS: Undervisor is cap color.



MODEL **227** TECH MESH

MSRP: \$17.50

FIT: D-RING ADJ. HOOK-AND-LOOP  
 SIZE: SM-MD, LG-XL  
 SHAPE: CASUAL STRUCTURED  
 FABRIC: LTWT PERF/TECH MESH  
 VISOR: PRECURVED  
 SWEATBAND: STAY-DRI



**SPLIT COLORS:** First color is crown front, visor, button, back stripe, and backstrap. Second color is back mesh panels.



MODEL **325** WASHED SANDWICH VISOR

MSRP: \$10.50

FIT: ADJ. HOOK-AND-LOOP  
 SHAPE: RELAXED UNSTRUCTURED  
 FABRIC: HEAVYWEIGHT CHINO TWILL  
 VISOR: PRECURVED  
 SWEATBAND: COTTON

(VIEW ALL COLORWAYS ON PAGE 33)



+ SMALL/LADIES SIZE ONLY.

TRENDING COLORS:





**WOMEN**

**MODEL 112P PRINTED TRUCKER**

MSRP: \$10.00

FIT: ADJ. SNAPBACK  
 SHAPE: MID-PRO  
 FABRIC: TWILL/POLY MESH  
 VISOR: PRECURVED  
 SWEATBAND: COTTON



(VIEW ALL COLORWAYS ON PAGE 17)

**TRENDING COLORS:**



+ SMALL/LADIES SIZE ONLY.

**MODEL 111 GARMENT WASHED TRUCKER**

MSRP: \$9.50

FIT: ADJ. SNAPBACK  
 SHAPE: RELAXED UNSTRUCTURED  
 FABRIC: TWILL/NYLON MESH  
 VISOR: PRECURVED  
 SWEATBAND: COTTON



(VIEW ALL COLORWAYS ON PAGE 19)

**TRENDING COLORS:**



+ SMALL/LADIES SIZE ONLY.

**MODEL 322 WASHED CHINO CHARCOAL**

MSRP: \$10.00

FIT: ADJ. HOOK-AND-LOOP  
 SHAPE: RELAXED UNSTRUCTURED  
 FABRIC: HEAVYWEIGHT CHINO TWILL  
 VISOR: PRECURVED  
 SWEATBAND: COTTON



(VIEW ALL COLORWAYS ON PAGE 33)

**TRENDING COLORS:**



+ SMALL/LADIES SIZE ONLY.

**MODEL 192 WASHED CADET STRAPBACK**

MSRP: \$12.50

FIT: ADJ. HOOK-AND-LOOP  
 SHAPE: CADET UNSTRUCTURED  
 FABRIC: HEAVYWEIGHT CHINO TWILL  
 VISOR: SPORT PRECURVED  
 SWEATBAND: COTTON



**COLORS:** Undervisor is cap color.





MODEL **141** CHUNK TWIST KNIT W/ CUFF MSRP: \$15.50

FIT: ONE SIZE FITS MOST  
SHAPE: SLOUCH  
FABRIC: 100% ACRYLIC



COLORS:



MODEL **143** CHUNK POM BEANIE W/ CUFF MSRP: \$14.50

FIT: ONE SIZE FITS MOST  
SHAPE: SLOUCH  
FABRIC: 100% ACRYLIC



COLORS:



MODEL **145** SCRUNCH BEANIE MSRP: \$11.00

FIT: ONE SIZE FITS MOST  
SHAPE: SLOUCH  
FABRIC: 100% ACRYLIC



COLORS:



MODEL **138** CABLE KNIT BEANIE MSRP: \$9.00

FIT: ONE SIZE: SMALL  
SHAPE: 4 TOPSEAM KNIT  
FABRIC: 100% ACRYLIC



COLORS:





VISORS

MODEL **159** R-ACTIVE LITE RUNNING VISOR

MSRP: \$14.00

FIT: ADJ. HOOK-AND-LOOP | SHAPE: VISOR 2" FRONT PANEL | FABRIC: LTWT PERFORMANCE | VISOR: PRECURVED | SWEATBAND: STAY-DRI



**COLORS:** First color is crown, visor, and undervisor color. Second color is visor and side insert.



SIDE EMBROIDERY NOT AVAILABLE



MODEL **160** R-ACTIVE LITE OUTDOORS VISOR

MSRP: \$12.00

FIT: ADJ. HOOK-AND-LOOP | SHAPE: VISOR 2" FRONT PANEL | FABRIC: LTWT PERFORMANCE | VISOR: PRECURVED | SWEATBAND: STAY-DRI



**COLORS:** Undervisor is charcoal.



MODEL **2010** R-SERIES R BAND

MSRP: \$7.00

FIT: ONE SIZE FITS MOST | SHAPE: R BAND | FABRIC: DURABLE GLITTER/POLYESTER | VISOR: N/A | SWEATBAND: COMFORT FIT ELASTIC

**GLITTER COLORS:**



RETAIL HANGER INCLUDED

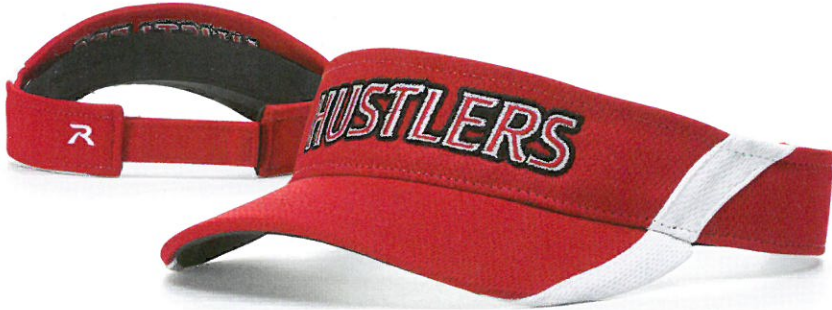




MODEL **708** DRYVE COLOR SPLIT VISOR

MSRP: \$12.00

FIT: ADJ. HOOK-AND-LOOP | SIZE: SM, MD/LG | SHAPE: VISOR 2" FRONT PANEL | FABRIC: PERF MICRO MESH | VISOR: PRECURVED | SWEATBAND: STAY-DRI



**COLORS:** First color is front panels & visor. Second color is side & back panels. Third color is color blocking. Undervisor is charcoal



SIDE EMBROIDERY NOT AVAILABLE

MODEL **R45** R-SERIES GARMENT WASHED VISOR

MSRP: \$5.50

FIT: ADJ. HOOK-AND-LOOP | SHAPE: VISOR 2 1/4" FRONT PANEL | FABRIC: R-SERIES 100% COTON TWILL | VISOR: PRECURVED | SWEATBAND: COTTON



**SOLID VISOR COLORS:** Undervisor is cap color.



MODEL **848** CAMO ADJUSTABLE VISOR

MSRP: \$9.50

FIT: ADJ. HOOK-AND-LOOP | SHAPE: VISOR 2 1/4" FRONT PANEL | FABRIC: TWILL | VISOR: PRECURVED | SWEATBAND: COTTON



**CAMO COLORS:** Undervisor is cap color.





# R SERIES R-SERIES

VALUE DONE RIGHT

## R55 GARMENT WASHED TWILL

**FIT:** ADJUSTABLE CLOTH HIDEAWAY  
**SHAPE:** RELAXED UNSTRUCTURED  
**FABRIC:** 100% COTTON TWILL  
**VISOR:** PRECURVED  
**SWEATBAND:** COTTON  
**MSRP:** \$5.70



**COLORS:** Undervisor is cap color.



## MODEL R65 UNSTRUCTURED TWILL

MSRP: \$5.00

**FIT:** ADJ. HOOK-AND-LOOP | **SHAPE:** RELAXED UNSTRUCTURED | **FABRIC:** R-SERIES 100% COTTON TWILL | **VISOR:** PRECURVED | **SWEATBAND:** COTTON



**COLORS:** Undervisor is cap color.





MODEL **R66** UNSTRUCTURED SANDWICH VISOR

MSRP: \$6.00

FIT: ADJ. CLOTH HIDEAWAY | SHAPE: RELAXED UNSTRUCTURED | FABRIC: R-SERIES 100% COTTON TWILL | VISOR: PRECURVED | SWEATBAND: COTTON



**COLORS:** Undervisor is cap color. Second color is visor insert.



MODEL **R78** STRUCTURED SANDWICH VISOR

MSRP: \$5.90

FIT: ADJ. HOOK-AND-LOOP | SHAPE: CASUAL STRUCTURED | FABRIC: R-SERIES 100% COTTON TWILL | VISOR: PRECURVED | SWEATBAND: COTTON



**COLORS:** First color is crown, button, visor, and undervisor. Second color is visor insert and eyelets.



MODEL **R75** STRUCTURED TWILL

MSRP: \$5.50

FIT: ADJ. HOOK-AND-LOOP | SHAPE: CASUAL STRUCTURED | FABRIC: R-SERIES 100% COTTON TWILL | VISOR: PRECURVED | SWEATBAND: COTTON



**COLORS:** Undervisor is cap color.





R-SERIES

MODEL **R45** GARMENT WASHED VISOR

MSRP: \$5.50

**FIT:** ADJ. HOOK-AND-LOOP  
**SHAPE:** VISOR 2 1/4" FRONT PANEL  
**FABRIC:** 100% COTTON TWILL  
**VISOR:** PRECURVED  
**SWEATBAND:** COTTON



**COLORS:** Undervisor is cap color.



MODEL **R70** STRUCTURED TWILL R-FLEX

MSRP: \$10.50

**FIT:** R-FLEX  
**SIZE:** ONE SIZE FITS MOST  
**SHAPE:** CASUAL STRUCTURED  
**FABRIC:** COTTON STRETCH  
**VISOR:** PRECURVED  
**SWEATBAND:** COTTON



**COLORS:** Undervisor is cap color.



MODEL **R80** REFLECTIVE TRIM

MSRP: \$9.50

**FIT:** ADJ. HOOK-AND-LOOP  
**SHAPE:** CASUAL STRUCTURED  
**FABRIC:** POLY-CANVAS  
**VISOR:** PRECURVED  
**SWEATBAND:** COTTON



**COLORS:** Undervisor is black.



Safety Green

MODEL **R93** STRUCTURED CAMO

MSRP: \$10.50

**FIT:** ADJ. HOOK-AND-LOOP  
**SHAPE:** CASUAL STRUCTURED  
**FABRIC:** 100% COTTON TWILL  
**VISOR:** PRECURVED  
**SWEATBAND:** COTTON



**COLORS:** Undervisor is black.



Upland Camo



MODEL **R15** SOLID BEANIE

MSRP: \$4.50

FIT: ONE SIZE FITS MOST  
SHAPE: 4 TOP SEAM KNIT  
FABRIC: 100% POLYESTER



SOLID CAP COLORS:

Black	Red	Navy	Royal	Grey	Blaze Org
Dk Green	Cardinal	Maroon	Col Blue	Gold	Purple
Pink	White	Orange	Kelly		
Wheat	Burnt Org	Loden			

MODEL **R16** 2 COLOR BEANIE

MSRP: \$4.80

FIT: ONE SIZE FITS MOST  
SHAPE: 4 TOP SEAM KNIT  
FABRIC: 100% ACRYLIC



TWO-COLORS: *Second color is the bottom stripe.*

Black/Orange	Black/Red	Red/Navy	Navy/Red	Navy/Orange	Loden/Khaki
Dk Green/Gold	Grey/Black	Grey/Navy	Grey/Royal	Grey/Red	Royal/Red

MODEL **R18** SOLID BEANIE W/CUFF

MSRP: \$5.00

FIT: ONE SIZE FITS MOST  
SHAPE: 4 TOP SEAM KNIT  
FABRIC: 100% ACRYLIC



SOLID CAP COLORS:

Black	Red	Navy	Royal	Grey	Blaze Org
Dk Green	Cardinal	Maroon	Col Blue	Gold	Purple
Pink	White	Orange	Kelly		
Wheat	Burnt Org	Loden			

MODEL **R19** 2 COLOR BEANIE W/CUFF

MSRP: \$5.50

FIT: ONE SIZE FITS MOST  
SHAPE: 4 TOP SEAM KNIT  
FABRIC: 100% ACRYLIC



TWO-COLORS: *Second color is the bottom cuff.*

Black/Red	Black/Grey	Black/Orange	Dk Green/Gold	Dk Green/Grey	Loden/Khaki
Navy/Red	Navy/Grey	Royal/Grey	Red/Grey	Purple/Grey	Purple/Gold

MODEL **R20** MICROFLEECE BEANIE

MSRP: \$7.50

FIT: ONE SIZE FITS MOST  
SHAPE: 4 TOP SEAM KNIT  
FABRIC: 100% POLYESTER



SOLID COLORS:

Black	Red	Navy	Royal
Charcoal	Dk Green	Purple	White
Neon Yellow	Neon Org	Grey	

MODEL **R22** MICROFLEECE HEADBAND

MSRP: \$7.50

FIT: ONE SIZE FITS MOST  
SHAPE: HEADBAND  
FABRIC: 100% POLYESTER



SOLID COLORS:

Black	Red	Navy	Royal
Charcoal	Dk Green	Purple	White
Neon Yellow	Neon Org	Grey	



## Off-shore Private Label headwear with Richardson's service-driven support.

- Price Includes 10,000 Stitches
- Free conceptual art and samples
- After sample approval, average ship time from Oregon is 85 days
- Competitive price points and delivery times
- Full customization and decoration options
- Minimum Order Quantity 576 – Discounts at 1,584 and 4,032



### MODEL R12PL TRUCKER CAP

FIT: ADJ. SNAPBACK

SHAPE: MID-PRO | FABRIC: COTTON-POLY/POLY MESH | VISOR: PRECURVED | SWEATBAND: COTTON

PRICE (MSRP) (includes embroidery up to 10,000 stitches)

Quantity	576-1583	1584-4031	4032+
Price	\$6.50	\$5.90	\$5.40

Price as shown: \$8.96

TWILL COLORS:

Black	Red	Navy	Royal	Charcoal	Orange
Dk Green	Dark Brown	Maroon	Grey	Gold	Purple
Khaki	Col Blue	Pink	Driftwood	Stone	White

MESH COLORS:

Black	Red	Navy	Grey	Charcoal	Stone
Dk Brown	Neon Yellow	Neon Org	White	Royal	



### MODEL R25PL R-ACTIVE LITE

FIT: ADJ. HOOK-AND-LOOP

SHAPE: CASUAL STRUCTURED | FABRIC: LTWT PERFORMANCE | VISOR: PRECURVED | SWEATBAND: STAY-DRI

PRICE (MSRP) (includes embroidery up to 10,000 stitches)

Quantity	576-1583	1584-4031	4032+
Price	\$7.90	\$7.30	\$6.70

Price as shown: \$9.22

R-ACTIVE LT COLORS:

Black	Red	Navy	Royal	Charcoal	Orange
Dk Green	Scarlet	Maroon	Grey	Canary	Purple
Khaki	Col Blue	Neon Yellow	Neon Org	White	



### MODEL R13PL FOAM TRUCKER

FIT: ADJ. SNAPBACK

SHAPE: CASUAL STRUCTURED PINCH | FABRIC: FOAM/POLY MESH | VISOR: PRECURVED | SWEATBAND: COTTON

PRICE (MSRP) (includes embroidery up to 10,000 stitches)

Quantity	576-1583	1584-4031	4032+
Price	\$6.10	\$5.40	\$5.00

Price as shown: \$7.06

POLY FOAM COLORS:

Black	Scarlet	Navy	Royal	Tan	Yellow
Dk Green	Neon Yellow	Neon Org	Light Grey	Gold	Col Blue
Slate Brown	Light Pink	White			

MESH COLORS:

Black	Red	Navy	Grey	Charcoal	Stone
Dk Brown	Neon Yellow	Neon Org	White	Royal	



### MODEL R55PL GARMENT WASHED

FIT: ADJ. HIDEAWAY CLOTH BACKSTRAP

SHAPE: RELAXED UNSTRUCTURED | FABRIC: TWILL | VISOR: PRECURVED | SWEATBAND: COTTON

PRICE (MSRP) (includes embroidery up to 10,000 stitches)

Quantity	576-1583	1584-4031	4032+
Price	\$6.90	\$6.20	\$5.70

Price as shown: \$7.86

TWILL COLORS:

Black	Red	Navy	Royal	Charcoal	Orange
Dk Green	Dk Brown	Maroon	Grey	Gold	Purple
Khaki	Col Blue	Pink	Driftwood	Stone	White





PRIVATE LABEL PROMOTIONAL LINE



MODEL **R65PL** COTTON TWILL

FIT: ADJ. HOOK-AND-LOOP

SHAPE: RELAXED UNSTRUCTURED | FABRIC: TWILL | VISOR: PRECURVED | SWEATBAND: COTTON

PRICE (MSRP) (includes embroidery up to 10,000 stitches)

Quantity	576-1583	1584-4031	4032+
Price	\$6.60	\$5.90	\$5.50

Price as shown: \$7.76

TWILL COLORS:

Black	Red	Navy	Royal	Charcoal	Orange
Dk Green	Dk Brown	Maroon	Grey	Gold	Purple
Khaki	Cool Blue	Pink	Driftwood	Stone	White



MODEL **R75PL** VALUE STRUCTURED

FIT: ADJ. HOOK-AND-LOOP

SHAPE: CASUAL STRUCTURED | FABRIC: TWILL | VISOR: PRECURVED | SWEATBAND: COTTON

PRICE (MSRP) (includes embroidery up to 10,000 stitches)

Quantity	576-1583	1584-4031	4032+
Price	\$6.70	\$6.10	\$5.60

Price as shown: \$7.42

TWILL COLORS:

Black	Red	Navy	Royal	Charcoal	Orange
Dk Green	Dk Brown	Maroon	Grey	Gold	Purple
Khaki	Cool Blue	Pink	Driftwood	Stone	White



DECORATION AND TRIMS (P)

Front Embroidery Decoration

	Price
Flat Embroidery (Up to 10,000 Stitches Anywhere)	Included in Cap Price
+ Cost per Each Additional 1,000 Flat Stitches	\$0.10
3D Embroidery (Up to 10,000 Stitches Anywhere)	\$0.60 (per cap upcharge)
+ 3D Embroidery - Cost per Each Additional 1,000 3D Stitches	\$0.14

Alternative Front Decoration - Upcharges

Screen Printed Front Panel - Up to 3 Colors	No Upcharge
Sonic Weld	\$0.90
Woven Patch - Merrowed Edge	\$0.20
Embroidered Patch - Merrowed Edge	\$0.60
Applique - Embroidered	No Upcharge
Applique - Woven Label	No Upcharge

Second Location Decoration

Flat Embroidery (When an Alternative Front Decoration Option is Chosen)	\$0.60 (per location)
2-Color Small Woven Applique Label - Stitched on All Sides	\$0.36 (per location)
2 or 3-Color Clip Label - Sewn at Top of Adjustable Back Opening	\$0.36 (per location)
2-Color Drop Label on Back Strap	\$0.20 (per location)
Seam Tape Printing 1-Color	\$0.36 (up to six seams)
Sandwich Visor - Woven Design Insert	\$0.50

Trims & Options

Premium Private Woven Inside Main Label - Stitched on All Sides	Included in Cap Price
Sandwich Visor Insert	\$0.20
Contrast Cap Stitching	\$0.10
Printed 1-Side 2" x 3.5" Hangtag	\$0.10



# OUTDOOR

Inspired by adventure,  
designed for the elements.

## 112FP FIVE PANEL TRUCKER

FIT: ADJUSTABLE SNAPBACK  
SHAPE: MID-PRO  
FABRIC: TWILL/POLY MESH  
VISOR: PRECURVED  
SWEATBAND: COTTON  
MSRP: \$7.50

**NEW**

AVAILABLE MARCH 2018



**SPLIT COLORS:** First color is crown front panels, eyelets, visor, undervisor, and button. Second color is crown back mesh panels, backstrap, and contrast stitching.



Charcoal/Black

Charcoal/White

Heather Grey/Amber Gold

Heather Grey/Black

Pale Khaki/Loden

Army Olive/Tan

Black/White

Khaki/Coffee

Navy/White

## MODEL 309 DUCK CLOTH CANVAS

MSRP: \$10.50

FIT: ADJ. HOOK-AND-LOOP  
SHAPE: CASUAL STRUCTURED  
FABRIC: CANVAS  
VISOR: PRECURVED  
SWEATBAND: COTTON

## MODEL 435 WAXED COTTON

MSRP: \$17.00

FIT: ADJ. HOOK-AND-LOOP  
SHAPE: RELAXED UNSTRUCTURED  
FABRIC: WAXED/OIL CLOTH  
VISOR: PRECURVED  
SWEATBAND: COTTON



**SOLID COLORS:** Undervisor is cap color



Buck



Dark Olive



**SOLID COLORS:** Undervisor is cap color



Buck



Dark Olive



MODEL **155** R-ACTIVE LITE OUTDOORS CAP

MSRP: \$11.50

FIT: D-RING ADJ. HOOK-AND-LOOP | SHAPE: RELAXED UNSTRUCTURED | FABRIC: LTWT PERFORMANCE | VISOR: PRECURVED | SWEATBAND: STAY-DRI



**COLORS:** Second color is the undervisor, wrap, eyelets, and trim features.



MODEL **160** R-ACTIVE LITE OUTDOORS

MSRP: \$12.00

FIT: ADJ. HOOK-AND-LOOP | SHAPE: VISOR 2" FRONT PANEL | FABRIC: LTWT PERFORMANCE | VISOR: PRECURVED | SWEATBAND: STAY-DRI



**COLORS:** Undervisor is charcoal.



MODEL **198** 5 PANEL CAMP CAP

MSRP: \$9.90

FIT: ADJ. CLOTH HIDEAWAY BACKSTRAP | SHAPE: 5 PANEL UNSTRUCTURED | FABRIC: HERRINGBONE COTTON | VISOR: FLAT | SWEATBAND: COTTON



**COLORS:** Undervisor is cap color.





MODEL **810** WIDE BRIM SUN HAT

MSRP: \$28.00

FIT: ONE SIZE FITS MOST | SHAPE: WIDE BRIM BUCKET | FABRIC: LTWT PERFORMANCE | VISOR: 2 1/2" BRIM | SWEATBAND: STAY-DRI



**COLORS:** All colorways have charcoal eyelets, undervisor and edge taping on brim



MODEL **809** R-ACTIVE LITE BUCKET HAT

MSRP: \$19.00

SIZE: MD (7 1/4), LG (7 5/8) | SHAPE: BUCKET | FABRIC: LTWT PERFORMANCE | VISOR: 2 1/4" BRIM | SWEATBAND: STAY-DRI



**COLORS:** Undervisor is cap color



MODEL **812** BUCKET HAT W/ TWO COLOR BAND

MSRP: \$20.00

SIZE: MD (7 1/4), LG (7 5/8) | SHAPE: BUCKET | FABRIC: POLY-COTTON | VISOR: 2 1/4" BRIM | SWEATBAND: COTTON

**COLORS:** Undervisor is cap color





MODEL **822** STRAW SAFARI HAT

MSRP: \$25.50

FIT: ONE SIZE FITS MOST  
 SHAPE: SAFARI  
 FABRIC: 100% SEAGRASS STRAW  
 VISOR: 3" BRIM  
 SWEATBAND: COMFORT STRETCH



BAND COLORS: Undervisor is khaki.



MODEL **824** CLASSIC GAMBLER HAT

MSRP: \$24.00

FIT: ONE SIZE FITS MOST  
 SHAPE: GAMBLER  
 FABRIC: 100% TOYO STRAW  
 VISOR: 3" BRIM  
 SWEATBAND: COMFORT STRETCH



BAND COLORS: Undervisor is khaki.



MODEL **826** TWO TONE GAMBLER HAT

MSRP: \$26.50

FIT: ONE SIZE FITS MOST  
 SHAPE: GAMBLER  
 FABRIC: 100% TOYO STRAW  
 VISOR: 3" BRIM  
 SWEATBAND: COMFORT STRETCH



BAND COLORS: Undervisor is khaki.



MODEL **827** WATERMAN

MSRP: \$21.00

FIT: ONE SIZE FITS MOST  
 SHAPE: RANCH  
 FABRIC: 100% STRAW  
 VISOR: 4 1/2" BRIM  
 SWEATBAND: COMFORT STRETCH

**NEW**

AVAILABLE  
 SPRING 2018



COLORS: Undervisor is khaki.





# CAMO

BLEND IN OR STAND OUT



KRYPTTEK™

MULTICAM®

KING'S CAMO®



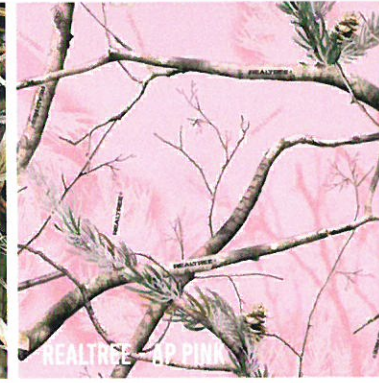
REALTREE - XTRA



REALTREE - MAX1



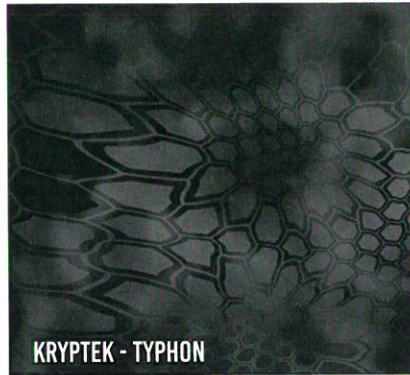
REALTREE - MAX5



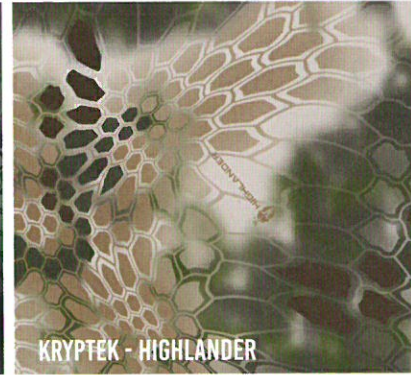
REALTREE - AP PINK



REALTREE - AP SNOW



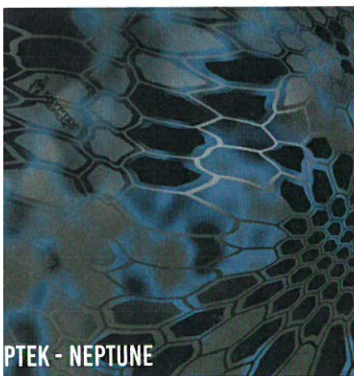
KRYPTTEK - TYPHON



KRYPTTEK - HIGHLANDER



KRYPTTEK - INFERNO



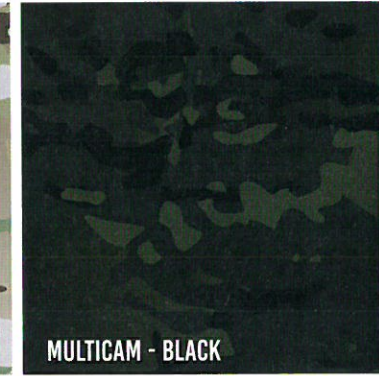
KRYPTTEK - NEPTUNE



KRYPTTEK - PONTUS



MULTICAM - ORIGINAL



MULTICAM - BLACK



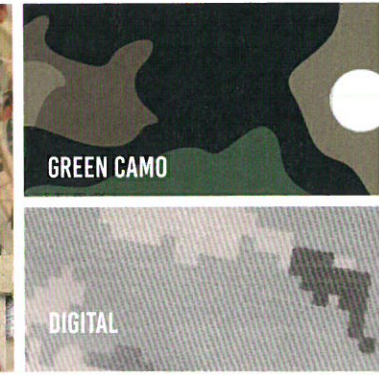
KING'S CAMO - DESERT SHADOW



KING'S CAMO - WOODLAND SHADOW



KING'S CAMO - FIELD SHADOW



DIGITAL



# 112P PRINTED TRUCKER

**FIT:** ADJUSTABLE SNAPBACK  
**SHAPE:** MID-PRO  
**FABRIC:** TWILL/POLY MESH  
**VISOR:** PRECURVED  
**SWEATBAND:** COTTON  
**MSRP:** \$10.00



**KRYPTEK**  
Typhon

**MILITARY CAMO COLORS:** First color is crown and visor camo, button, eyelets, undervisor, backstrap, and contrast stitching on back panels. Second color is crown back mesh.



**KRYPTEK CAMO COLORS:** First color is crown and visor camo, button, and eyelets. Second color is crown back mesh and contrast stitching on front panels and visor. *KrypTek Camo 100% Polyester.*



**REALTREE CAMO COLORS:** First color is crown and visor camo, button, and eyelets. Second color is crown back mesh and contrast stitching.



+ SMALL/LADIES SIZE ONLY.

## MODEL 874 STRUCTURED PERFORMANCE CAMO

MSRP: \$14.00

**FIT:** ADJ. HOOK-AND-LOOP | **SHAPE:** CASUAL STRUCTURED | **FABRIC:** 100% POLYESTER | **VISOR:** PRECURVED | **SWEATBAND:** STAY-DRI



**KRYPTEK**  
Pontus

**KRYPTEK COLORS:** Undervisor is charcoal.





CAMO

MODEL **862** MULTICAM® TRUCKER **NEW** AVAILABLE APRIL 2018

MSRP: \$14.00

FIT: ADJ. SNAPBACK | SHAPE: MID-PRO | FABRIC: 50/50 NYCO RIPSTOP/POLY MESH | VISOR: PRECURVED | SWEATBAND: COTTON



**COLORS:** First color is crown and visor camo, and eyelets. Second color is back mesh, and backstrap. Contrast stitching on crown and visor. Undervisor is black.



Original/Coyote Brown      Black/Black



MODEL **863** STRUCTURED MULTICAM® **NEW** AVAILABLE APRIL 2018

MSRP: \$17.00

FIT: ADJ. HOOK-AND-LOOP | SHAPE: RELAXED STRUCTURED | FABRIC: 50/50 NYCO RIPSTOP | VISOR: PRECURVED | SWEATBAND: COTTON



**COLORS:** Undervisor is black.



Original      Black



MODEL **865** R-FLEX MULTICAM® **NEW** AVAILABLE APRIL 2018

MSRP: \$19.00

FIT: R-FLEX | SIZE: SM-MD (7-7¼), LG-XL (7½-7¾) | SHAPE: MID-PRO | FABRIC: 98% NYLON, 2% SPANDEX | VISOR: PRECURVED | SWEATBAND: COTTON



**COLORS:** Undervisor is black.



Original





MODEL **111P** GARMENT WASHED PRINTED TRUCKER

MSRP: \$10.00

FIT: ADJ. SNAPBACK | SHAPE: RELAXED UNSTRUCTURED | FABRIC: TWILL/POLY MESH | VISOR: PRECURVED | SWEATBAND: COTTON



**REALTREE**  
Max5

**COLORS:** First color is crown and visor camo, button, and eyelets. Second color is crown, back mesh and contrast stitching.



AP Pink/White+ | Digital Camo/Light Green | Highlander/Brown | Max1/Brown



Max5/Buck | Typhon/Black | Xtra/Brown | Green Camo/Black

+ SMALL/LADIES SIZE ONLY.

MODEL **870** UNSTRUCTURED PERFORMANCE CAMO

MSRP: \$14.00

FIT: ADJ. HOOK-AND-LOOP | SHAPE: RELAXED UNSTRUCTURED | FABRIC: 100% POLYESTER | VISOR: PRECURVED | SWEATBAND: STAY-DRI



**KRYPTEK**  
Neptune



**KRYPTEK COLORS:** Undervisor is charcoal.



Highlander | Inferno | Neptune | Pontus



Typhon

MODEL **840** UNSTRUCTURED TWILL CAMO

MSRP: \$13.50

FIT: ADJ. HOOK-AND-LOOP | SHAPE: RELAXED UNSTRUCTURED | FABRIC: TWILL | VISOR: PRECURVED | SWEATBAND: COTTON



**REALTREE**  
Max1

**COLORS:** Undervisor is camo pattern. Digital camo undervisor is driftwood.



AP Pink+ | AP Snow | Digital Camo | Highlander



Max1 | Max5 | Typhon | Xtra



Woodland Shadow | Green Camo

+ SMALL/LADIES SIZE ONLY.



CAMO

MODEL **843** STRUCTURED CAMO STRAPBACK

MSRP: \$12.50

FIT: ADJ. HOOK-AND-LOOP | SHAPE: CASUAL STRUCTURED | FABRIC: 100% COTTON TWILL | VISOR: PRECURVED | SWEATBAND: COTTON



843 Digital Camo

**COLORS:** Undervisor is camo pattern. Digital camo undervisor is driftwood.



MODEL **844** DUCK CLOTH FRONT W/CAMO BACK

MSRP: \$12.50

FIT: ADJ. HOOK-AND-LOOP | SHAPE: CASUAL STRUCTURED | FABRIC: CANVAS DUCK CLOTH/TWILL | VISOR: PRECURVED | SWEATBAND: COTTON



**COLORS:** Undervisor matches top visor.



MODEL **846** CAMO CROWN W/ DUCK CLOTH VISOR

MSRP: \$12.00

FIT: ADJ. HOOK-AND-LOOP | SHAPE: CASUAL STRUCTURED | FABRIC: CANVAS DUCK CLOTH/TWILL | VISOR: PRECURVED | SWEATBAND: COTTON



KRYPTEK Highlander

**COLORS:** Undervisor is black.





# MODEL 855 CAMO/AIRMESH R-FLEX

MSRP: \$14.00

FIT: R-FLEX | SIZE: SM-MD (7-7 1/4), LG-XL (7 3/8-7 7/8) | SHAPE: CASUAL STRUCTURED | FABRIC: COTTON-POLY/AIRMESH | VISOR: PRECURVED | SWEATBAND: COMFORT STRETCH



COLORS: Undervisor is black.



Digital Camo/Light Green



Highlander/Buck



Max1/Brown



Max5/Buck



Typhon/Black



Xtra/Brown



# MODEL 847 STONE CROWN W/ CAMO VISOR

MSRP: \$9.00

FIT: ADJ. HOOK-AND-LOOP | SHAPE: CASUAL STRUCTURED | FABRIC: BRUSHED CHINO/TWILL | VISOR: PRECURVED | SWEATBAND: COTTON



COLORS: Undervisor is camo pattern.



Stone/Highlander



Stone/Max5



Stone/Typhon



Stone/Xtra



# MODEL 845 STRUCTURED CAMO R-FLEX

MSRP: \$13.50

FIT: R-FLEX | SIZE: SM-MD (7-7 1/4), LG-XL (7 3/8-7 7/8) | SHAPE: CASUAL STRUCTURED | FABRIC: COTTON-POLY STRETCH | VISOR: PRECURVED | SWEATBAND: COMFORT STRETCH



COLORS: Undervisor is Ioden. Digital camo undervisor is khaki.



Digital Camo



Max1



Max5



Woodland Shadow



Xtra





CAMO

MODEL **883** BLAZE CROWN W/ CAMO VISOR

MSRP: \$8.00

FIT: ADJ. HOOK-AND-LOOP | SHAPE: CASUAL STRUCTURED | FABRIC: POLY CANVAS/TWILL | VISOR: PRECURVED | SWEATBAND: COTTON



COLORS: Undervisor is black.



MODEL **884** BLAZE CROWN W/ DUCK CLOTH VISOR

MSRP: \$8.00

FIT: ADJ. HOOK-AND-LOOP | SHAPE: CASUAL STRUCTURED | FABRIC: CANVAS DUCK CLOTH/POLY-COTTON | VISOR: PRECURVED | SWEATBAND: COTTON



COLORS: Undervisor is black.



MODEL **R93** R-SERIES STRUCTURED CAMO

MSRP: \$10.50

FIT: ADJ. HOOK-AND-LOOP | SHAPE: CASUAL STRUCTURED | FABRIC: R-SERIES 100% COTTON TWILL | VISOR: PRECURVED | SWEATBAND: COTTON



COLORS: Undervisor is black.





MODEL 121 KING'S CAMO MICROFLEECE BEANIE

MSRP: \$11.50

FIT: ONE SIZE FITS MOST | SHAPE: 6 TOPSEAM KNIT | FABRIC: 100% POLYESTER MICROFLEECE



COLORS:



Desert Shadow



Field Shadow



Woodland Shadow

MODEL 123 KING'S CAMO MICROFLEECE BEANIE W/ CUFF

MSRP: \$13.50

FIT: ONE SIZE FITS MOST | SHAPE: 4 TOPSEAM KNIT | FABRIC: 92% POLYESTER MICROFLEECE/8% SPANDEX



COLORS:



Desert Shadow



Field Shadow



Woodland Shadow

MODEL 133 FLEECE REVERSIBLE HUNTING BEANIE

MSRP: \$15.00

FIT: ONE SIZE FITS MOST | SHAPE: 6 TOPSEAM KNIT | FABRIC: SHELL 1 = 92% POLYESTER MICROFLEECE/8% SPANDEX, SHELL 2 = 100% ACRYLIC



COLORS: Reversible.



Driftwood/  
Blaze Orange



Driftwood/  
Woodland Shadow



# BEANIES/KNITS

Functional and fashionable.

## 148 HEATHERED POM BEANIE W/ CUFF

**FIT:** ONE SIZE FITS MOST  
**SHAPE:** 6 TOPSEAM KNIT  
**FABRIC:** 100% ACRYLIC  
**MSRP:** \$11.00



**COLORS:**



Grey/Col Blue/Black



Grey/Gold/Black



Grey/Kelly/Black



Grey/Orange/Black



Grey/Purple/Black



Grey/Royal/Black



Grey/Red/Black



Grey/White/Black

## MODEL 134 POM BEANIE W/ CUFF

**FIT:** ONE SIZE FITS MOST | **SHAPE:** 6 TOPSEAM KNIT | **FABRIC:** 100% ACRYLIC

MSRP: \$10.50



**COLORS:**



Black/Gold/White



Black/Grey/White



Black/Red/White



Cardinal/Black/White



Navy/Grey/White



Navy/Col Blue/White



Maroon/Black/White



Dark Green/Black/White



Navy/Red/White



Purple/Black/White



Red/Black/White



Royal/Black/White



MODEL 137 HEATHERED BEANIE W/ CUFF

MSRP: \$6.00

FIT: ONE SIZE FITS MOST | SHAPE: 4 TOPSEAM KNIT | FABRIC: 100% ACRYLIC



COLORS:



Black



Heather Grey



Navy



Red



Royal

MODEL 130 MARLED SLOUCH BEANIE **NEW** AVAILABLE FEBRUARY 2018

MSRP: \$7.50

FIT: ONE SIZE FITS MOST | SHAPE: SLOUCH | FABRIC: 100% ACRYLIC



COLORS:



Black/Grey/Charcoal



Navy/Grey/White



Royal/Grey/Charcoal



Pink/Grey/Light Pink



Red/Grey/Charcoal



Olive/Khaki/Light Khaki

MODEL 131 2 STRIPE POM BEANIE

MSRP: \$4.60

FIT: ONE SIZE FITS MOST | SHAPE: 6 TOPSEAM KNIT | FABRIC: 100% ACRYLIC



COLORS:



Black/Gold/White



Black/White/Grey



Black/White/Red



Cardinal/White/Black



Navy/White/Grey



Navy/White/Col Blue



Maroon/White/Black



Dark Green/White/Black



Navy/White/Red



Purple/White/Black



Red/White/Black



Royal/White/Black



MODEL **141** CHUNK TWIST KNIT BEANIE W/ CUFF

MSRP: \$15.50

FIT: ONE SIZE FITS MOST | SHAPE: SLOUCH | FABRIC: 100% ACRYLIC



COLORS:



Burgundy



Black



Cream/Mocha



Stone/Navy



Seafoam



Heather Charcoal



Heather Grey/Rust



Wheat

MODEL **143** CHUNK POM BEANIE W/ CUFF

MSRP: \$14.50

FIT: ONE SIZE FITS MOST | SHAPE: SLOUCH | FABRIC: 100% ACRYLIC



COLORS:



Burgundy



Black



Heather Charcoal



Heather Grey



Navy



Wheat



Cream/Mocha



Heather Grey/Rust



Stone/Navy

MODEL **145** SCRUNCH BEANIE

MSRP: \$11.00

FIT: ONE SIZE FITS MOST | SHAPE: SLOUCH | FABRIC: 100% ACRYLIC



SOLID COLORS:



Birch



Black



Heather Charcoal



Coral



Heather Grey



Navy



Rust



Wheat



Burgundy



MODEL **146** WAFFLE KNIT BEANIE W/ CUFF

MSRP: \$8.00

FIT: ONE SIZE FITS MOST | SHAPE: 4 TOPSEAM KNIT | FABRIC: 100% ACRYLIC



SOLID COLORS:



Burgundy



Birch



Black



Heather Charcoal



Coral



Heather Grey



Navy



Rust



Wheat

MODEL **147** SLOUCH KNIT BEANIE

MSRP: \$8.50

FIT: ONE SIZE FITS MOST | SHAPE: SLOUCH | FABRIC: 100% ACRYLIC



SOLID COLORS:



Black



Heather Charcoal



Heather Grey



Navy



Red



Royal



Rust



Wheat



White

MODEL **149** SUPER SLOUCH KNIT BEANIE

MSRP: \$9.00

FIT: ONE SIZE FITS MOST | SHAPE: SLOUCH | FABRIC: 100% ACRYLIC



SOLID COLORS:



Black



Kelly



Heather Charcoal



Heather Grey



Navy



Red



Royal



Rust



Wheat



White



BEANIES

MODEL 132 JACQUARD CAMO BEANIE

MSRP: \$7.50

FIT: ONE SIZE FITS MOST | SHAPE: 6 TOPSEAM KNIT | FABRIC: 100% ACRYLIC



COLORS:



Dark Green/Charcoal



Grey/Charcoal



Navy/Charcoal



Purple/Charcoal



Red/Charcoal



Royal/Charcoal



White/Charcoal

MODEL 127 MELANGE SLOUCH BEANIE

MSRP: \$7.50

FIT: ONE SIZE FITS MOST | SHAPE: 6 TOPSEAM KNIT | FABRIC: 100% ACRYLIC



COLORS:



Black/Grey



Dark Green/Grey



Navy/Grey



Purple/Grey



Red/Grey



Royal/Grey



Brown/Grey



Charcoal/Grey



Oatmeal/Grey

LAUREN, CUSTOMER SERVICE | 145 SCRUNCH BEANIE





MODEL **138** CABLE KNIT BEANIE

MSRP: \$9.00

FIT: ONE SIZE FITS MOST | SHAPE: 6 TOPSEAM KNIT | FABRIC: 100% ACRYLIC



COLORS:



MODEL **117** RIB KNIT BEANIE

MSRP: \$6.50

FIT: ONE SIZE FITS MOST | SHAPE: 6 TOPSEAM KNIT | FABRIC: 100% ACRYLIC



COLORS:



MODEL **119** RIB KNIT BEANIE W/ CUFF

MSRP: \$7.00

FIT: ONE SIZE FITS MOST | SHAPE: 6 TOPSEAM KNIT | FABRIC: 100% ACRYLIC



COLORS:





BEANIES

# R16 R-SERIES 2 COLOR BEANIE

FIT: ONE SIZE FITS MOST  
 SHAPE: 4 TOPSEAM KNIT  
 FABRIC: 100% ACRYLIC  
 MSRP: \$4.80



COLORS:



# MODEL R15 R-SERIES SOLID BEANIE

MSRP: \$4.50

FIT: ONE SIZE FITS MOST | SHAPE: 4 TOPSEAM KNIT | FABRIC: R-SERIES 100% ACRYLIC



COLORS:





# R19 R-SERIES 2 COLOR BEANIE W/ CUFF

FIT: ONE SIZE FITS MOST  
 SHAPE: 4 TOPSEAM KNIT  
 FABRIC: 100% ACRYLIC  
 MSRP: \$5.50



COLORS:



# MODEL R18 R-SERIES SOLID BEANIE W/ CUFF

MSRP: \$5.00

FIT: ONE SIZE FITS MOST | SHAPE: 4 TOPSEAM KNIT | FABRIC: R-SERIES 100% ACRYLIC



COLORS:





BEANIES

MODEL 144 POLARTEC® POWER STRETCH BEANIE

MSRP: \$18.00

FIT: ONE SIZE FITS MOST | SHAPE: STYLIZED SEAM CONSTRUCTION | FABRIC: POLARTEC POWER STRETCH MICROFLEECE



COLORS:



Black



Charcoal



MODEL 142 POLARTEC® MICROFLEECE HEADBAND

MSRP: \$13.50

FIT: ONE SIZE FITS MOST | SHAPE: HEADBAND | FABRIC: POLARTEC POWER STRETCH MICROFLEECE



COLORS:



Black



Charcoal



MODEL 120 POLARTEC® BASIC BEANIE **NEW** AVAILABLE APRIL 2018

MSRP: \$11.00

FIT: ONE SIZE FITS MOST | SHAPE: 4 TOPSEAM KNIT | FABRIC: POLARTEC POWER STRETCH MICROFLEECE



COLORS:



Black



Charcoal





MODEL **R20** R-SERIES MICROFLEECE BEANIE

MSRP: \$7.50

FIT: ONE SIZE FITS MOST | SHAPE: 4 TOPSEAM KNIT | FABRIC: R-SERIES 100% POLYESTER



COLORS:



MODEL **R22** R-SERIES MICROFLEECE HEADBAND

MSRP: \$7.50

FIT: ONE SIZE FITS MOST | SHAPE: HEADBAND | FABRIC: R-SERIES 100% POLYESTER



COLORS:



MODEL **123** KING'S CAMO MICROFLEECE BEANIE W/ CUFF

MSRP: \$13.50

FIT: ONE SIZE FITS MOST | SHAPE: 4 TOPSEAM KNIT | FABRIC: 100% POLYESTER MICROFLEECE



COLORS:



MODEL **121** KING'S CAMO MICROFLEECE BEANIE

MSRP: \$11.50

FIT: ONE SIZE FITS MOST | SHAPE: 4 TOPSEAM KNIT | FABRIC: 100% POLYESTER MICROFLEECE



COLORS:





# UMPIRE

The bases are covered with our full line of baseball and softball umpire caps.



## SURGE

FABRIC: PERFORMANCE POLY-SERGE  
 VISOR: PRECURVED  
 SHAPE: MID-PRO  
 SWEATBAND: STAY-DRI PERFORMANCE

MOD. NO.	FIT	VISOR LGTH.	STCH. ROWS	MSRP
520	FITTED	1 1/2"	3	\$13.50
525	ADJUSTABLE	1 1/2"	3	\$12.50
530	FITTED	2"	4	\$13.50
533	R-FLEX	2"	4	\$14.50
535	ADJUSTABLE	2"	4	\$12.50
540	FITTED	2 1/2"	6	\$13.50
543	R-FLEX	2 1/2"	6	\$14.50
545	ADJUSTABLE	2 1/2"	6	\$12.50
550	FITTED	2 3/4"	8	\$13.50
555	ADJUSTABLE	2 3/4"	8	\$12.00

COLOR OPTIONS: *Undervisor is cap color.*



## PRO MESH

FABRIC: PRO MESH  
 VISOR: PRECURVED  
 SHAPE: MID-PRO  
 SWEATBAND: COTTON/COMFORT STRETCH

MOD. NO.	FIT	VISOR LGTH.	STCH. ROWS	MSRP
430s5	SYSTEM 5	2"	4	\$14.00
432	FITTED	2"	4	\$13.00
445	FITTED	2 1/2"	6	\$13.00
440s5	SYSTEM 5	2 3/4"	8	\$14.00
455	FITTED	2 3/4"	8	\$13.00

COLOR OPTIONS: *Undervisor is cap color.*



## PULSE

FABRIC: PERFORMANCE STRETCH  
 VISOR: PRECURVED  
 SHAPE: MID-PRO  
 SWEATBAND: STAY-DRI PERFORMANCE

MOD. NO.	FIT	VISOR LGTH.	STCH. ROWS	MSRP
633	R-FLEX	2"	4	\$14.50
643	R-FLEX	2 1/2"	6	\$14.50
653	R-FLEX	2 3/4"	8	\$14.50

COLOR OPTIONS: *Undervisor is cap color.*



## SIZING CHART

FITTED: Sizes 6 3/4 - 8

SYSTEM 5 sizing: No.1 (6 3/8 - 6 3/4), No. 2 (6 1/4 - 7), No.3 (7 1/8 - 7 1/4), No.4 (7 3/8 - 7 1/2), No.5 (7 5/8 - 7 3/4)

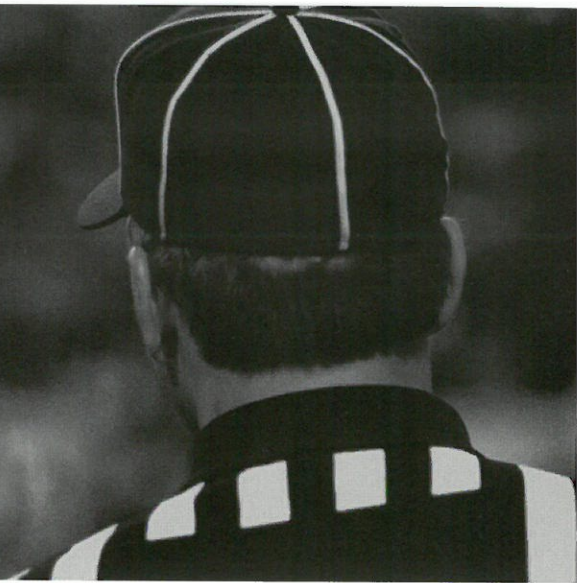
R-FLEX SM-MD (7 - 7 1/4), LG-XL (7 3/8 - 7 5/8)

ADJUSTABLE: Hook-and-loop back strap  
 MD-LG (7 - 7 3/4)



# OFFICIAL

Its easy to make the right call with our selection of officials caps.



## SURGE

**FABRIC:** PERFORMANCE POLY-SERGE  
**VISOR:** PRECURVED  
**SHAPE:** MID-PRO  
**SWEATBAND:** STAY-DRI PERFORMANCE

MODEL NO.	FIT	COLOR	MSRP
420	ADJUSTABLE		\$14.00
425	FITTED		\$15.00

*Undervisor is cap color.*



## PRO MESH

**FABRIC:** PRO MESH  
**VISOR:** PRECURVED  
**SHAPE:** MID-PRO  
**SWEATBAND:** COTTON/COMFORT STRETCH

MODEL NO.	FIT	COLOR	MSRP
453	R-FLEX		\$13.00
457	R-FLEX		\$13.00
465s5	SYSTEM 5		\$15.50
467s5	SYSTEM 5		\$14.50
475	FITTED		\$14.50
477	FITTED		\$14.00

*Undervisor is cap color.*

## PULSE

**FABRIC:** PERFORMANCE STRETCH  
**VISOR:** PRECURVED  
**SHAPE:** MID-PRO  
**SWEATBAND:** STAY-DRI PERFORMANCE

MODEL NO.	FIT	COLOR	MSRP
485	R-FLEX		\$14.00
487	R-FLEX		\$14.00

*Undervisor is cap color.*



## SIZING CHART

FITTED: Sizes 6¾-8

SYSTEM 5 sizing: No.1 (6¾-6¾), No. 2 (6¾-7), No.3 (7¼-7¼), No.4 (7¼-7¼), No.5 (7¼-7¼)

R-FLEX SM-MD (7-7¼), LG-XL (7¼-7¼)

ADJUSTABLE: Hook-and-loop back strap

MD-LG (7-7¼)



# PRODUCT DISPLAYS

A wide range of quality displays to showcase Richardson caps.



PREMIUM  
6 SHELF FLOOR DISPLAY  
\$350



PREMIUM  
3 SHELF COUNTER DISPLAY  
\$225



3 SHELF SLATWALL DISPLAY  
\$140



STANDARD  
6 SHELF FLOOR DISPLAY  
\$160



# INDEX

STYLE#	MSRP	PAGE
PTS20	\$16.00	3
PTS30	\$17.00	2
PTS40	\$17.00	4
PTS65	\$16.00	5
R15	\$4.50	53,74
R16	\$4.80	53,74
R18	\$5.00	53,75
R19	\$5.50	53,75
R20	\$7.50	53,77
R22	\$7.50	53,77
R45	\$5.50	49,52
R55	\$5.70	35,50
R65	\$5.00	35,50
R66	\$6.00	35,51
R70	\$10.50	30,52
R75	\$5.50	31,51
R78	\$5.90	31,51
R80	\$9.50	52
R93	\$10.50	52,66
110	\$10.50	20
111	\$9.50	19,44
111P	\$10.00	19,63
112	\$7.50	16
112FP	NEW \$7.50	17,56
112P	\$10.00	15,17,44,61
113	\$10.00	21
115	\$8.00	18,42
115CH	\$10.50	18,42
117	\$6.50	73
119	\$7.00	73
120	NEW \$11.00	76
121	\$11.50	67,77
123	\$13.50	67,77
127	\$7.50	72
130	NEW \$7.50	69
131	\$4.60	69
132	\$7.50	72
133	\$15.00	67
134	\$10.50	68
137	\$6.00	69
138	\$9.00	45,73
141	\$15.50	45,70
142	\$13.50	76
143	\$14.50	45,70
144	\$18.00	76
145	\$11.00	45,70
146	\$8.00	71
147	\$8.50	71
148	\$11.00	68
149	\$9.00	71
150	\$10.50	27
155	\$11.50	27,57
158	\$16.00	27
159	\$14.00	48
160	\$12.00	48,57
162	\$12.00	23
163	NEW \$12.00	12

STYLE#	MSRP	PAGE
165	\$14.00	9,21
168	\$10.50	23
172	\$13.50	8,22
174	NEW \$13.00	12
177	\$13.50	14
178	\$15.50	15
185	\$11.50	9
192	\$12.50	34,44
198	\$9.90	57
203	\$8.00	29
212	\$5.50	11
213	NEW \$10.00	21,42
214	\$6.00	11
220	\$12.00	25
221	\$15.50	24,43
222	\$12.00	20,26
225	\$10.50	25
227	\$17.50	24,43
232	\$8.00	34
236	\$16.00	34
245	\$12.00	15
265	\$9.00	30
275	\$9.30	14
309	\$10.50	56
312	\$7.50	29
320	\$10.00	32,43
320T	\$8.00	32
321	NEW \$14.00	32
322	\$10.00	33,44
325	\$10.50	33,43
330	\$10.00	33
380	\$11.00	34
402	\$14.50	13,26
414	\$11.50	10
420	\$14.00	79
425	\$15.00	79
430S5	\$14.00	78
432	\$13.00	78
435	\$17.00	56
439	\$14.50	13
440S5	\$14.00	78
445	\$13.00	78
453	\$13.00	79
455	\$13.00	78
457	\$13.00	79
465S5	\$15.50	79
467S5	\$14.50	79
475	\$14.50	79
477	\$14.00	79
485	\$14.00	79
487	\$14.00	79
495	\$12.50	10
510	\$12.00	28
511	\$11.00	23
514	\$12.00	6
520	\$13.50	78
525	\$12.50	78

STYLE#	MSRP	PAGE
530	\$13.50	78
533	\$14.50	78
535	\$12.50	78
540	\$13.50	78
543	\$14.50	78
545	\$12.50	78
550	\$13.50	78
555	\$12.00	78
585	\$14.00	7
633	\$14.50	78
643	\$14.50	78
653	\$14.50	78
707	\$10.70	47
708	\$12.00	49
712	\$9.50	46
715	\$13.00	47
740	\$10.00	46
775	\$8.00	47
809	\$19.00	58
810	\$28.00	14,58
812	\$20.00	58
822	\$25.50	59
824	\$24.00	59
826	\$26.50	59
827	NEW \$21.00	59
840	\$13.50	63
843	\$12.50	64
844	\$12.50	64
845	\$13.50	65
846	\$12.00	64
847	\$9.00	65
848	\$9.50	49
855	\$14.00	65
862	NEW \$14.00	62
863	NEW \$17.00	62
865	NEW \$19.00	62
870	\$14.00	63
874	\$14.00	61
883	\$8.00	66
884	\$8.00	66
917	\$11.20	40
918	\$18.00	40
920	\$11.60	40
921	\$18.00	39
925	\$13.00	37
951	\$12.00	36
952	\$11.00	36
953	\$15.50	38
954	\$10.00	38
955	\$9.80	37
956	\$15.50	39
957	\$13.00	41
958	\$10.20	41
2010	\$7.00	48
PL2 PROGRAM		54-55
PROMOTIONAL		80





**RICHARDSON®**

P.O. BOX 71130 Springfield, OR 97475  
[www.richardsonsports.com](http://www.richardsonsports.com)